

MixSim: A Hierarchical Framework for Mixed Reality Traffic Simulation

Simon Suo*, Kelvin Wong*, Justin Xu, James Tu,
Alexander Cui, Sergio Casas, Raquel Urtasun

WED-AM-133



UNIVERSITY OF
TORONTO

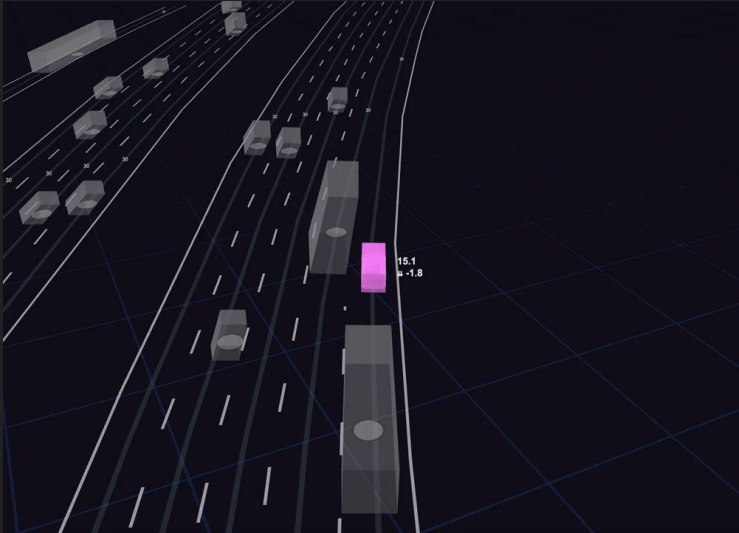


UNIVERSITY OF
WATERLOO



Contains audio

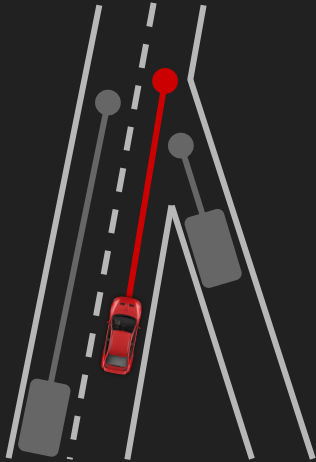
Industry today: non-reactive open-loop log replay



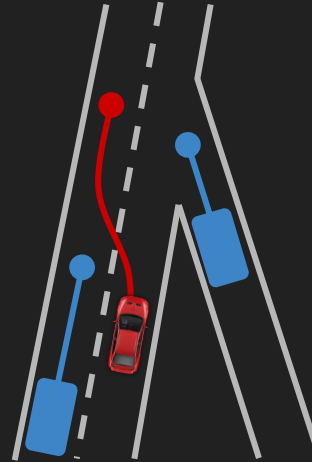
- ✗ Traffic agents do not react to the SDV
- ✗ SDV cannot observe consequences of its actions
- ✗ Cannot evaluate SDV in hypothetical situations

Mixed reality traffic simulation

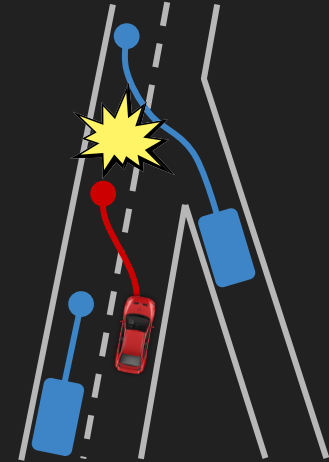
Real World Scenario



Reactive and Controllable Digital Twin

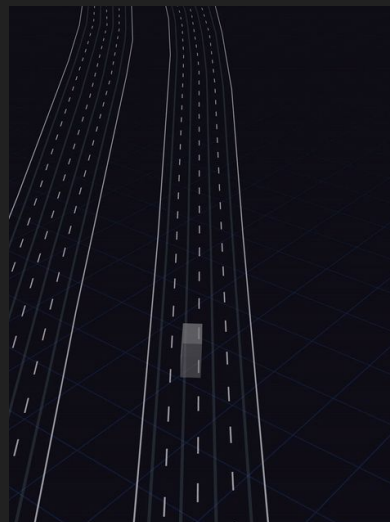


What if **SDV**
lane changes?



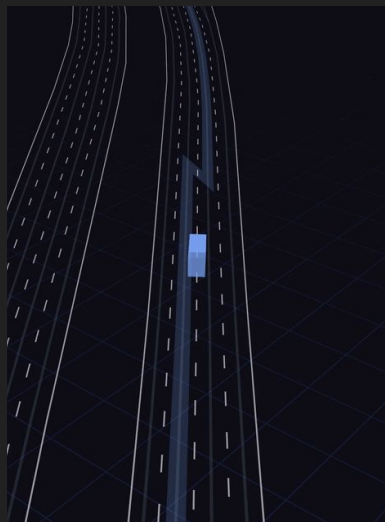
What if **agent**
cuts in front?

MixSim: our hierarchical framework



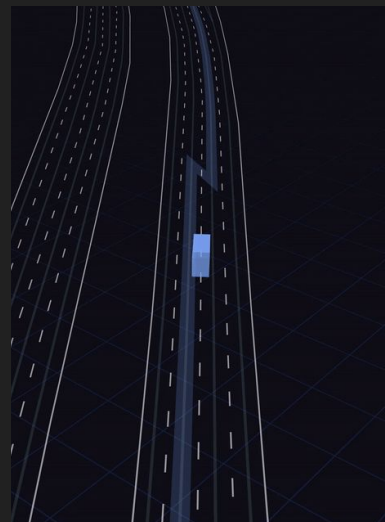
Initial Scenario Context

Routing
→



Route

Route-conditional
policy
→

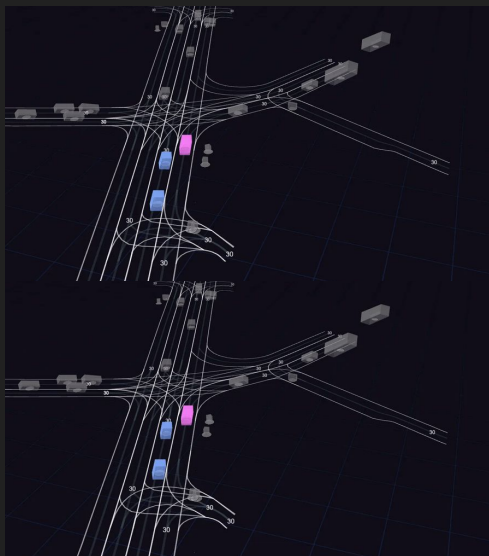


Reactive Simulation

MixSim: simulating mixed reality traffic scenarios



What if the **SDV** brakes?



What if the **agents** take different routes?



What if an **agent** cuts in front of the **SDV**?

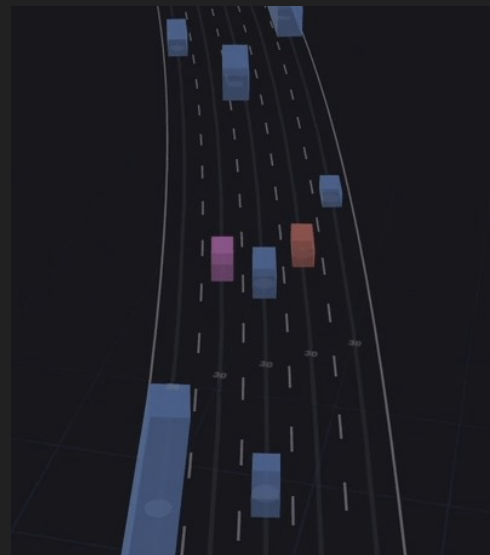
Reactive re-simulation



What if the **SDV** brakes?

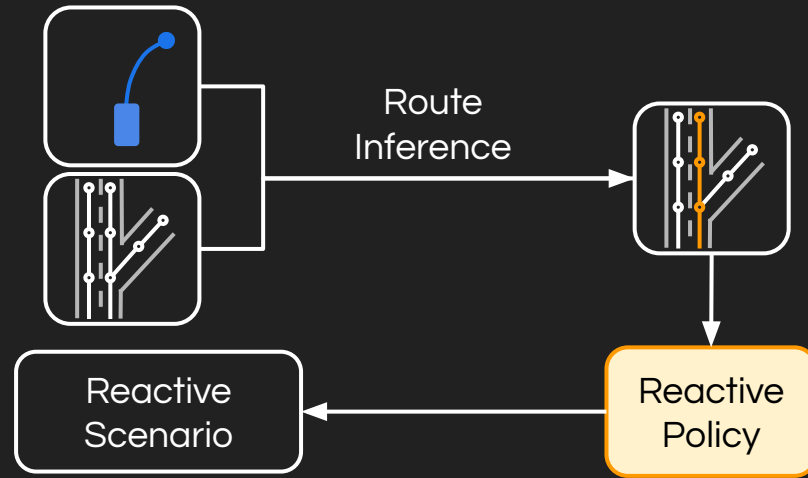


What if the **agents** take different routes?



What if an **agent** cuts in front of the **SDV**?

Reactive re-simulation



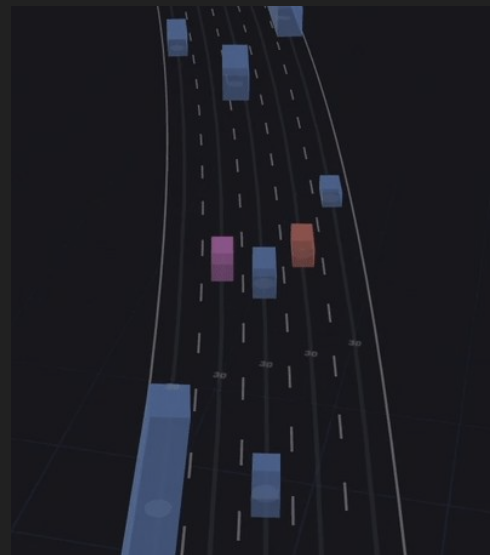
Sampling realistic variations



What if the **SDV** brakes?

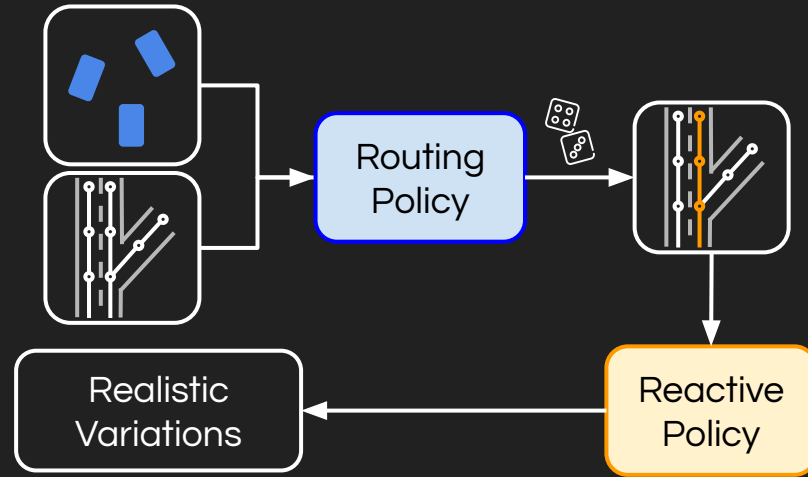


What if the **agents** take different routes?



What if an **agent** cuts in front of the **SDV**?

Sampling realistic variations



MixSim: simulating mixed reality traffic scenarios



What if the **SDV** brakes?

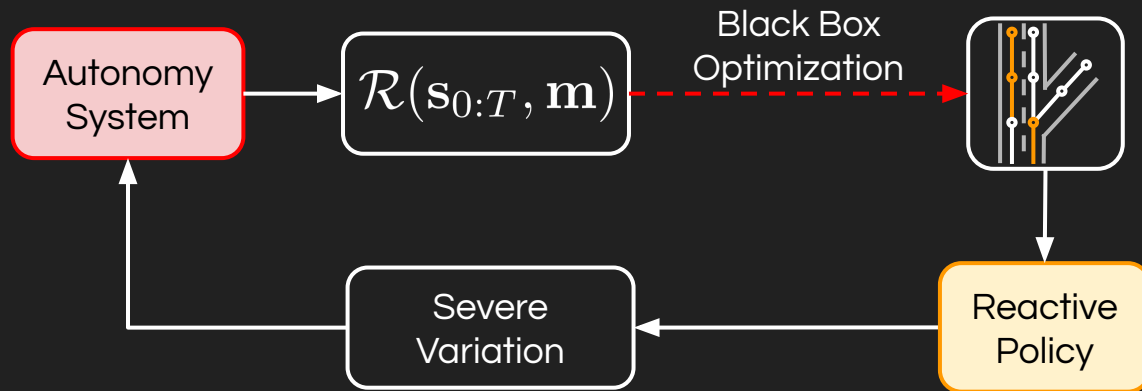


What if the **agents** take different routes?



What if an **agent** cuts in front of the **SDV**?

Finding safety-critical variations



Summary

- MixSim: a hierarchical framework for *mixed reality traffic simulation*
 - Learn a hierarchical policy disentangling route from controls
 - By varying routes, we can simulate mixed reality traffic scenarios
- MixSim can re-simulate a real world scenario and explore its *what-if* scenarios
- This enables us to safely and accurately test an SDV in closed-loop simulation

MixSim: A Hierarchical Framework for Mixed Reality Traffic Simulation

Simon Suo*, Kelvin Wong*, Justin Xu, James Tu,
Alexander Cui, Sergio Casas, Raquel Urtasun

WED-AM-133



UNIVERSITY OF
TORONTO



UNIVERSITY OF
WATERLOO