

ETH zürich



UvA UNIVERSITY
OF AMSTERDAM



JUNE 18-22, 2023

CVPR



VANCOUVER, CANADA

DeepLSD: Line Segment Detection and Refinement with Deep Image Gradients

THU-AM-081



Rémi
Pautrat



Daniel
Barath



Viktor
Larsson



Martin R.
Oswald

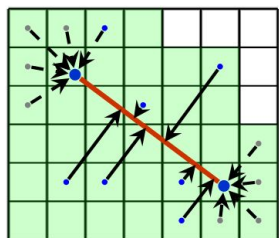
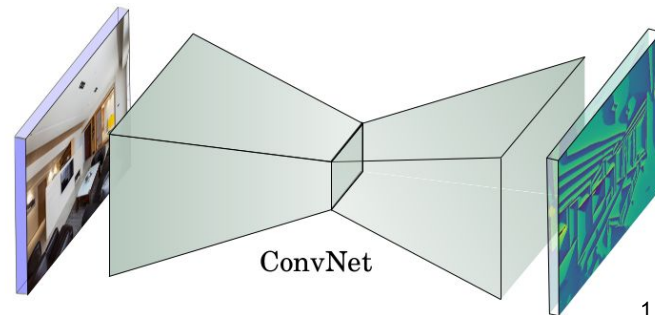


Marc
Pollefeys

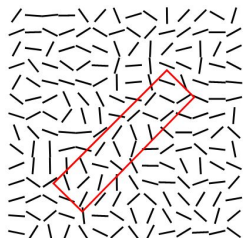
DeepLSD: a line segment detector with ...

... Robustness thanks to deep learning

⇒ An **attraction field** representation that require **no human labelling**



1



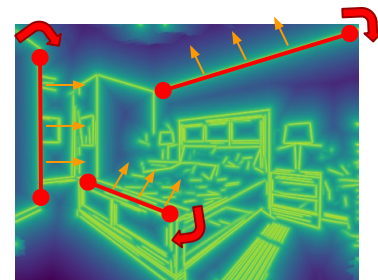
2

... Accuracy through low-level strategies

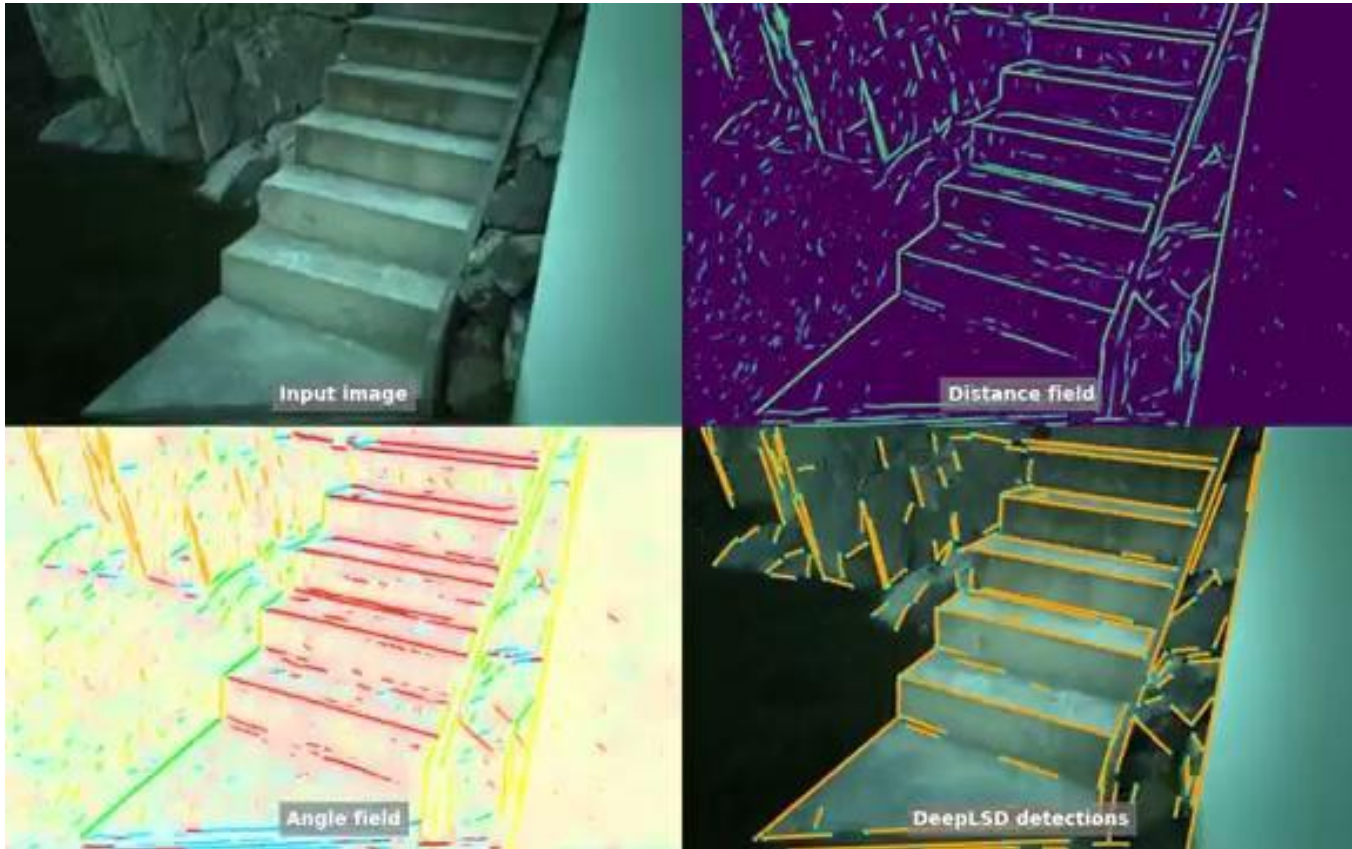
⇒ Extract line segments with **handcrafted** methods

... Additional accuracy and repeatability

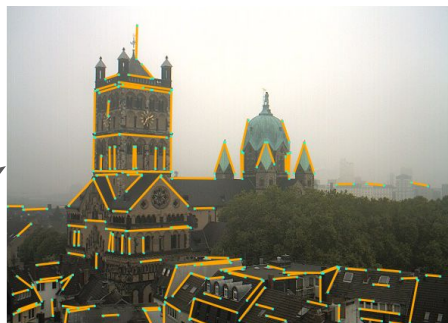
⇒ **Line refinement** through **optimization**



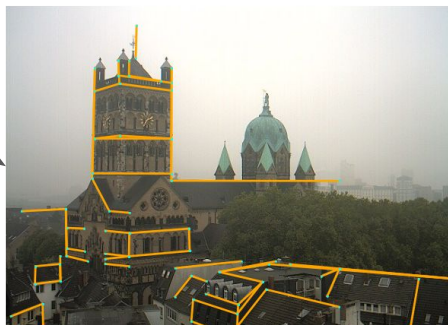
DeepLSD demo



Motivation



Handcrafted



Learned

- Fast
- Well localized
- Not robust to image changes
- Robust
- Can target specific lines
- Poorly localized
- Often require human labels

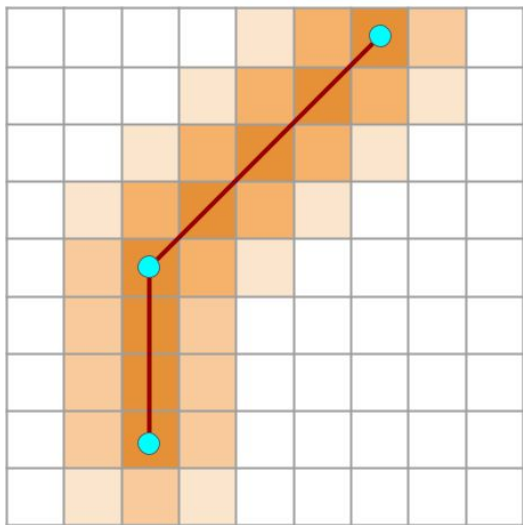
Motivation



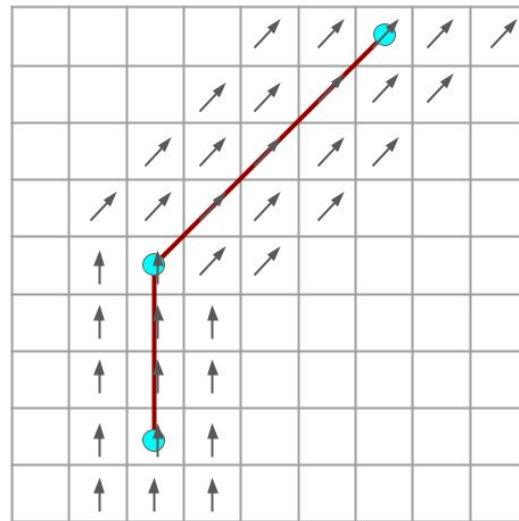
DeepLSD

- Robust
- Well localized
- No human labels required

A line representation suitable for deep learning

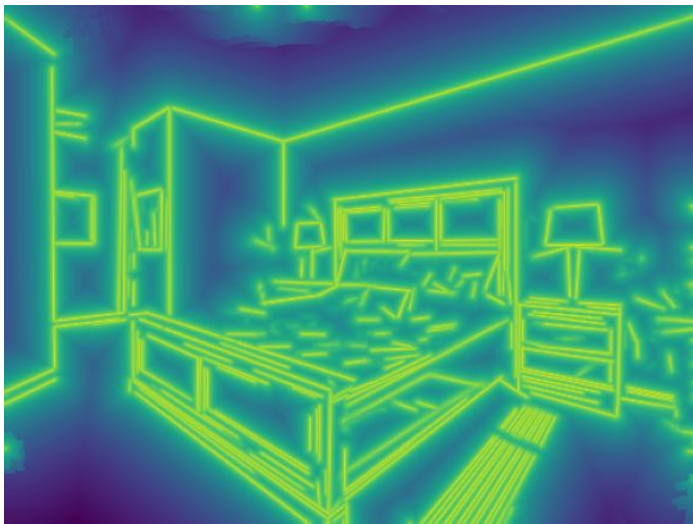


**Line distance
field**

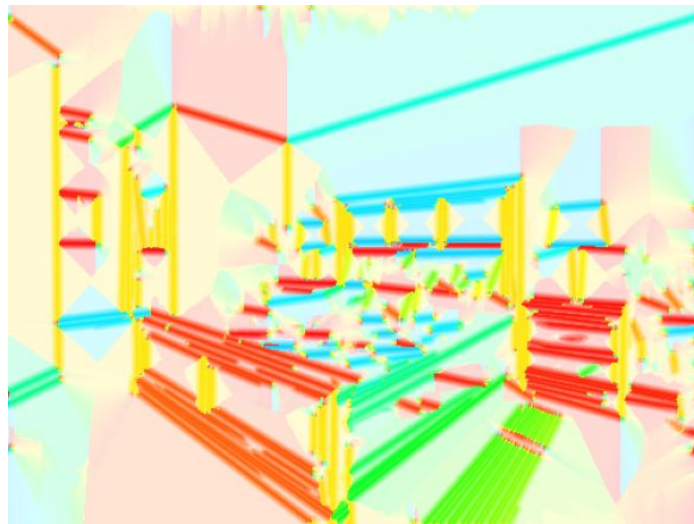


**Line angle
field**

A line representation suitable for deep learning

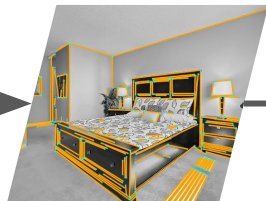
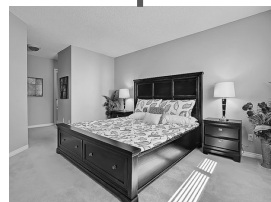


**Line distance
field**

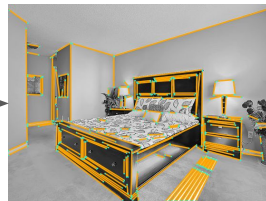


**Line angle
field**

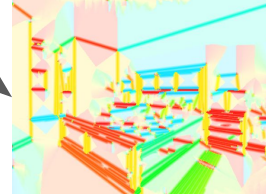
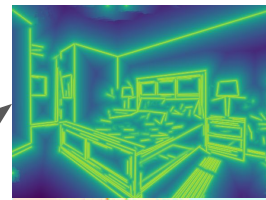
Line ground truth generation



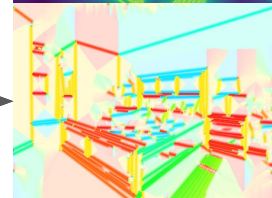
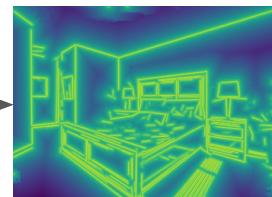
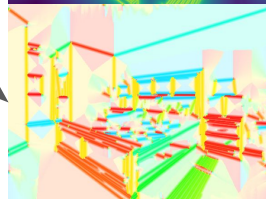
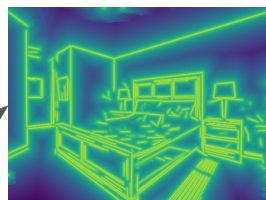
Warp
+
LSD¹



Warp
back

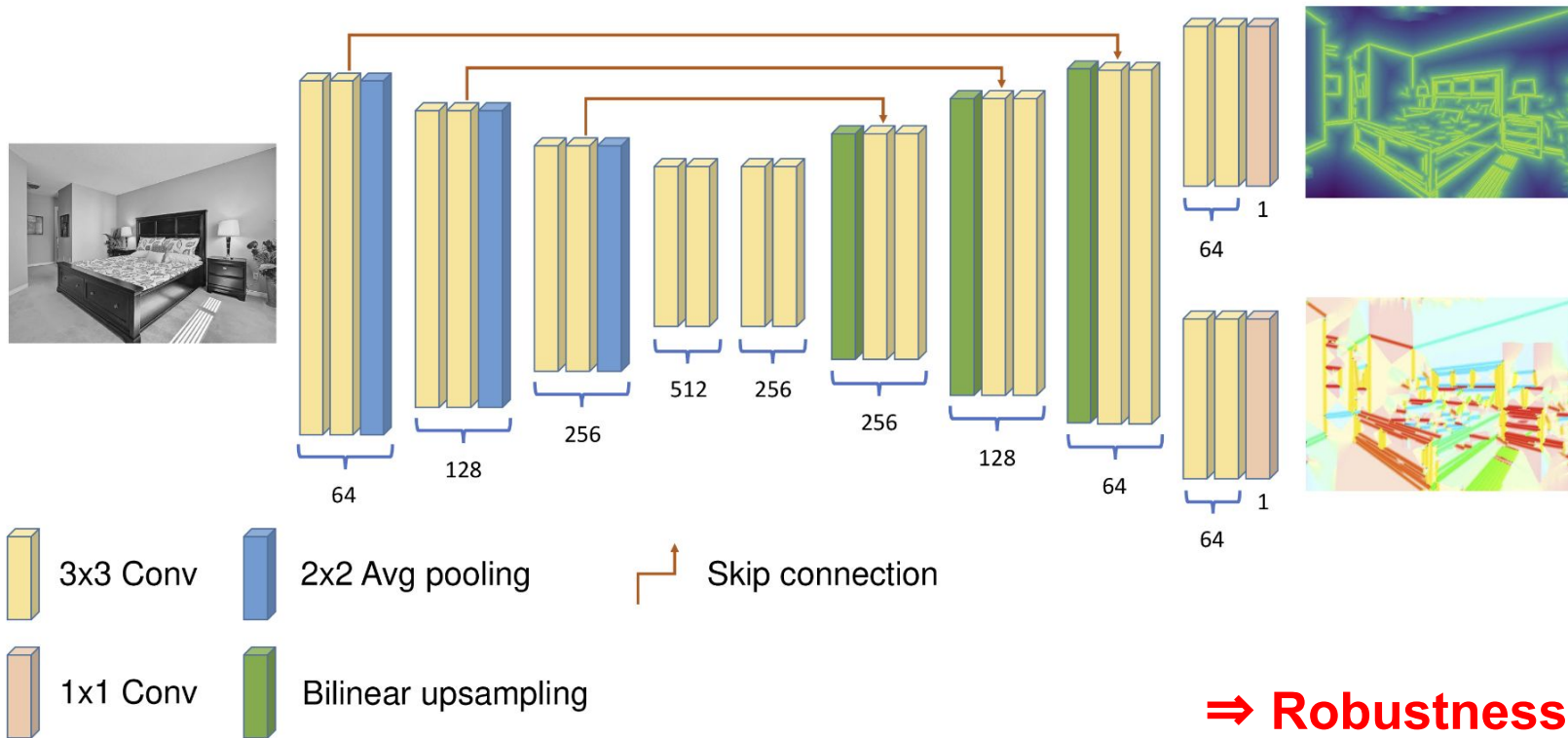


Convert to
attraction field

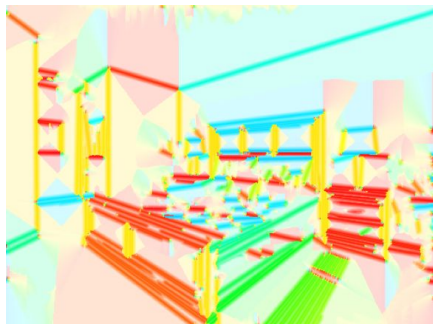
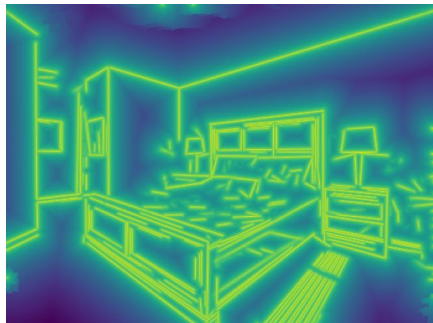


Aggregate

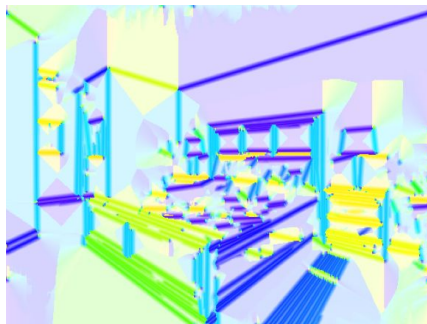
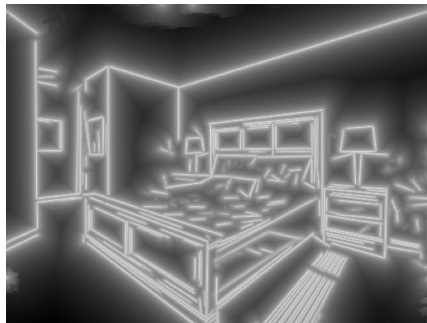
Attraction field inference



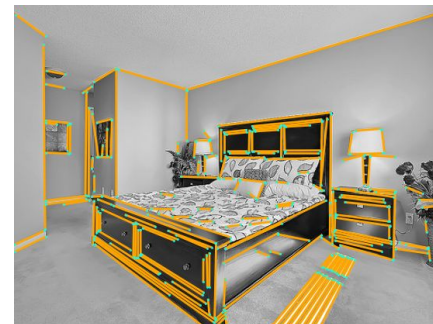
From attraction field to line segments



Attraction field



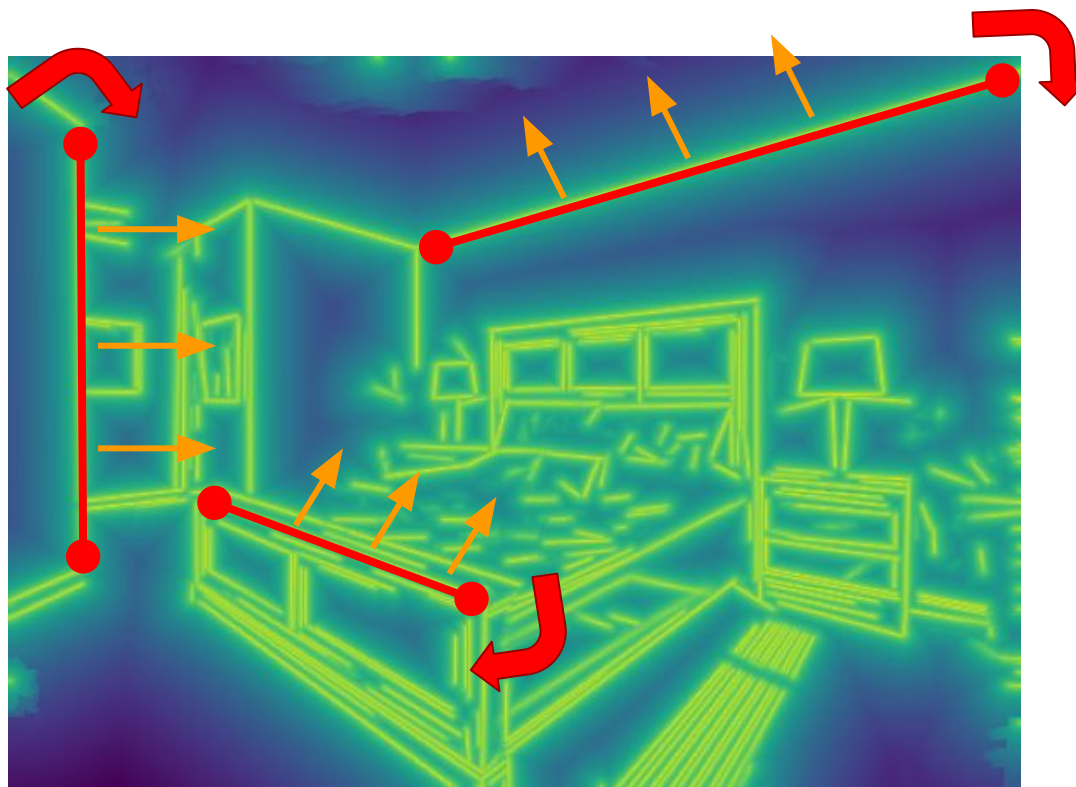
Deep image gradient



LSD¹

⇒ Accuracy

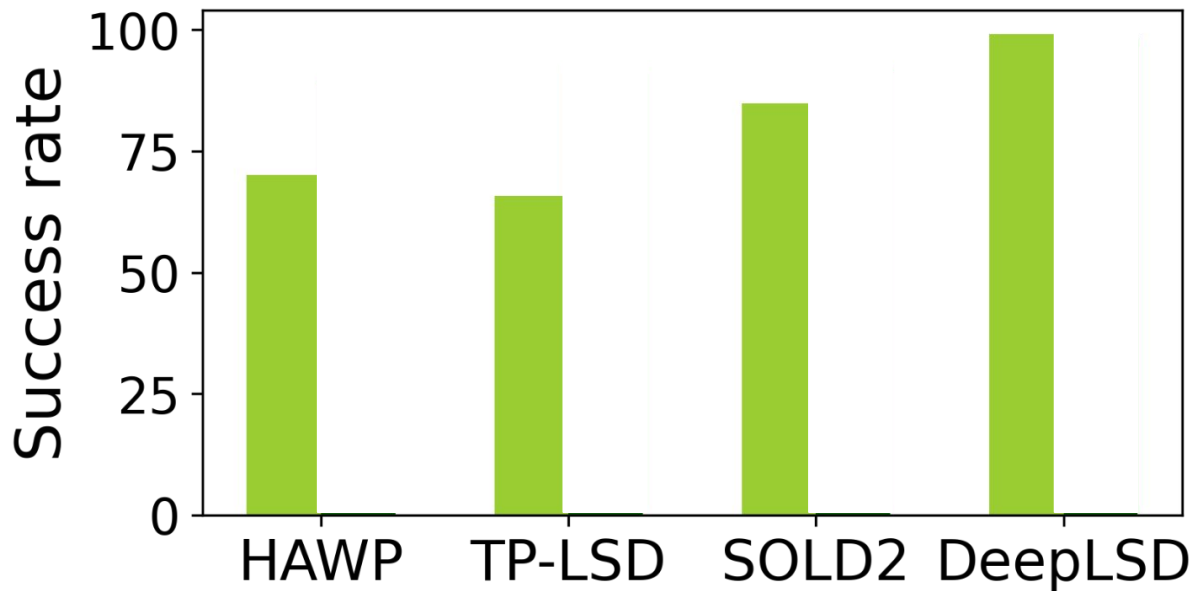
Final line refinement



⇒ Increased accuracy

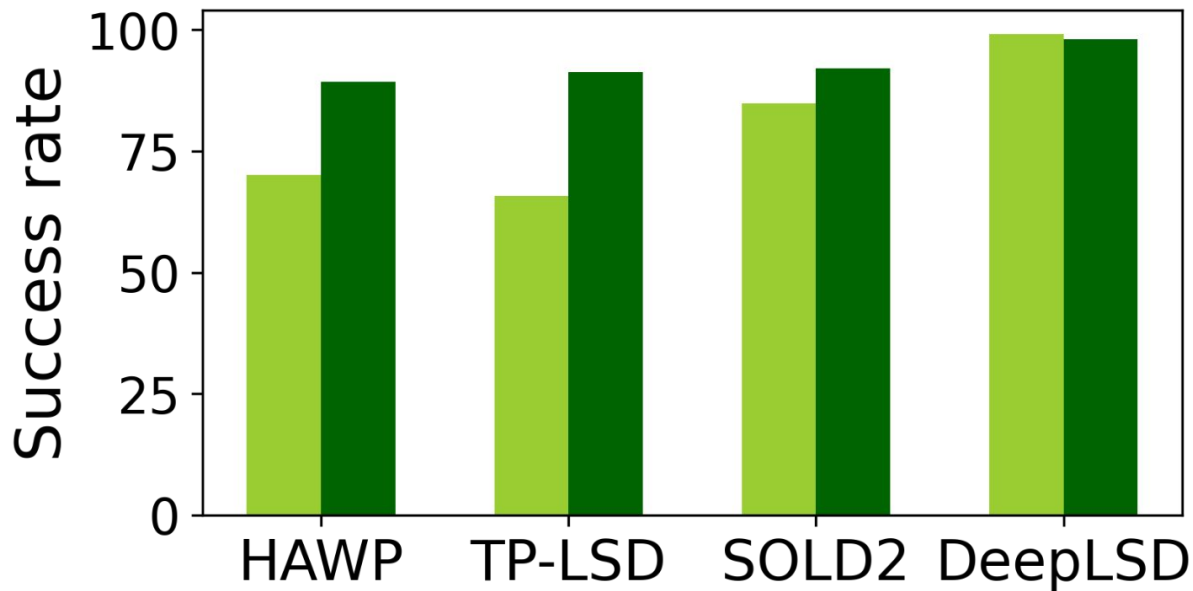
A refinement that can be applied to any detector

■ No refinement



Homography estimation on the Wireframe dataset

A refinement that can be applied to any detector

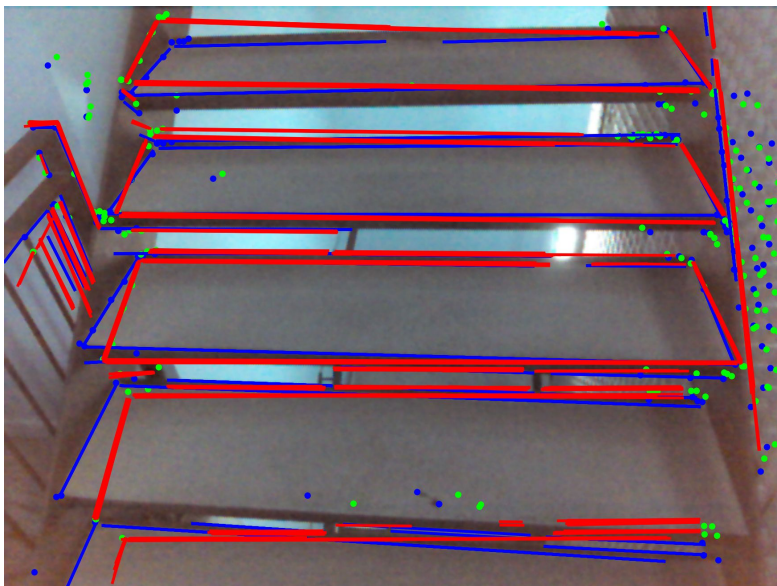


Homography estimation on the Wireframe dataset

Robustness + high accuracy = new applications¹



Robustness + high accuracy = precise localization



Reprojected points and lines to the camera pose predicted by HLoc¹

Visual localization on
7Scenes stairs:

	Trans / Rot error ↓	Accuracy ↑
HLoc	4.7 / 1.25	53.4

Robustness + high accuracy = precise localization



Visual localization on
7Scenes stairs:

	Trans / Rot error ↓	Accuracy ↑
HLoc	4.7 / 1.25	53.4
DeepLSD	3.1 / 0.85	76.6

+43%

Reprojected points and lines to the
camera pose predicted by our PL-HLoc

DeepLSD: Conclusion

- A hybrid line detector that **requires no human labels**, is **robust** to image changes, and is **highly accurate**
- A **line refinement** that can **boost the accuracy of existing line detectors**
- Can **unlock line-based geometrical applications** and obtain **state-of-the-art** results when used in combination with points

Project page:



Paper:



Code:

