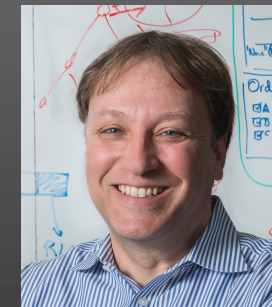
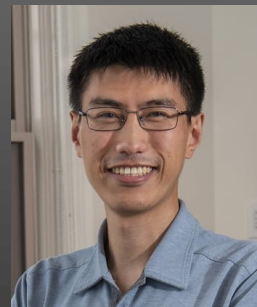
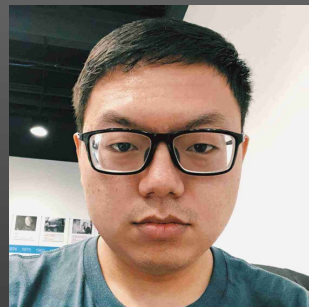


QuantArt: Quantizing Image Style Transfer Towards High Visual Fidelity

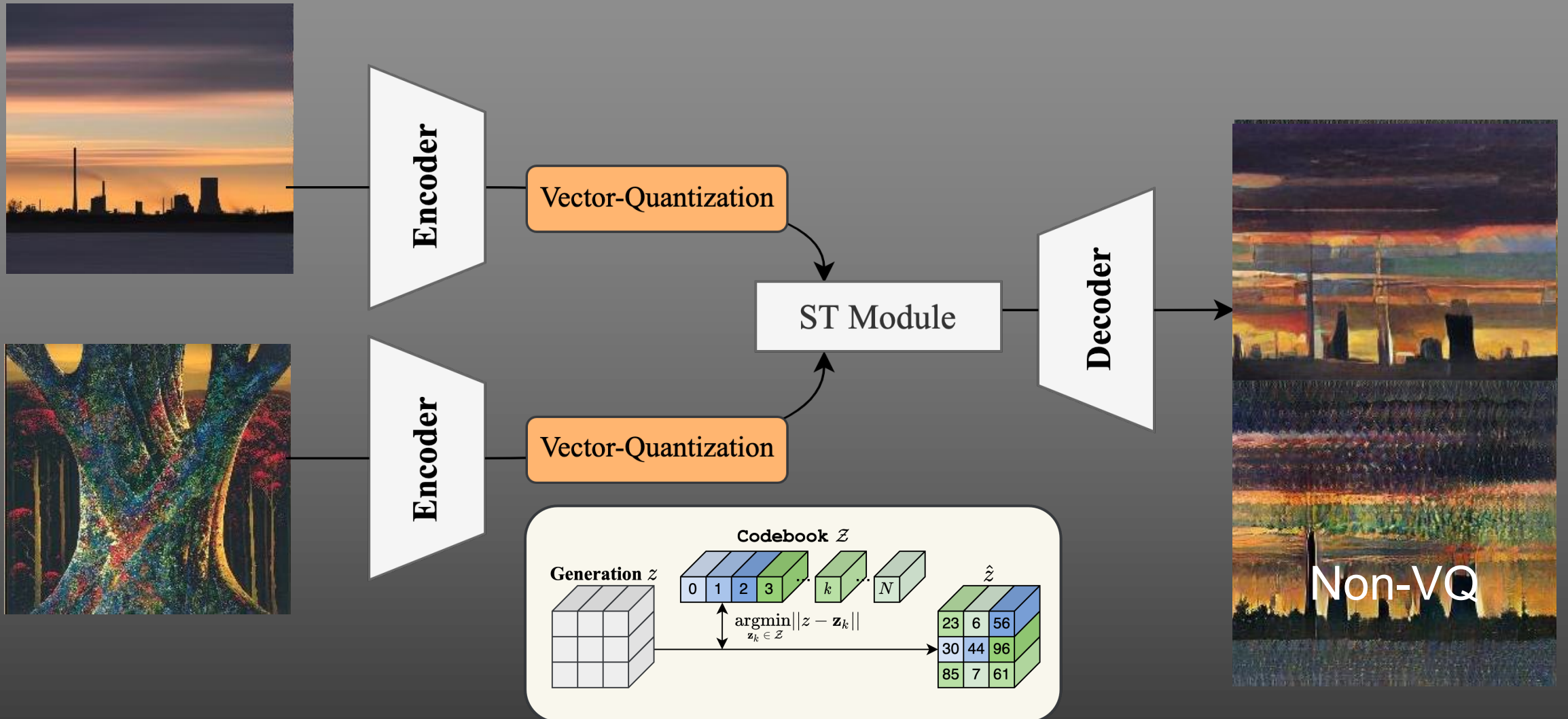
Siyu Huang*, Jie An*, Donglai Wei, Jiebo Luo, Hanspeter Pfister

Harvard University, University of Rochester, Boston College

CVPR 2023



A Quick View of This Work



A Quick View of This Work

Photo → Art

Photo → Photo

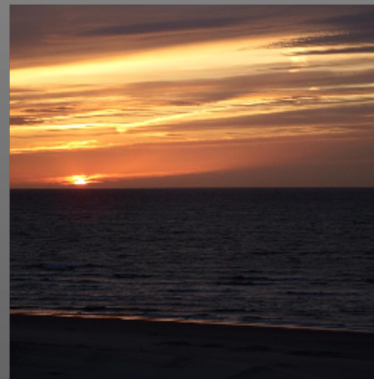
Art → Art

Art → Photo

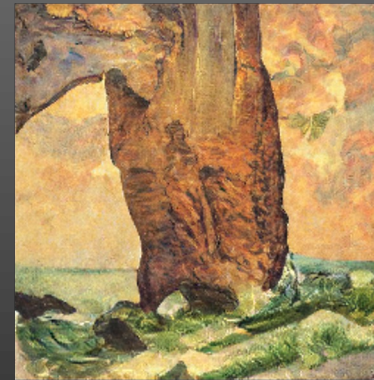
Input



Reference

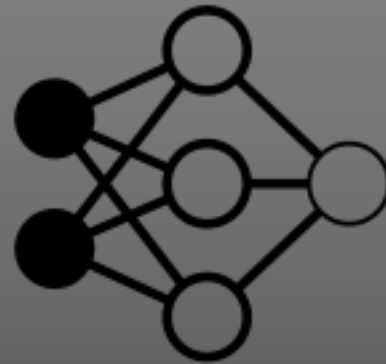


Ours



Neural Style Transfer

Content



Style



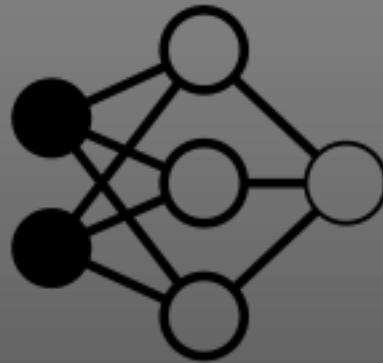
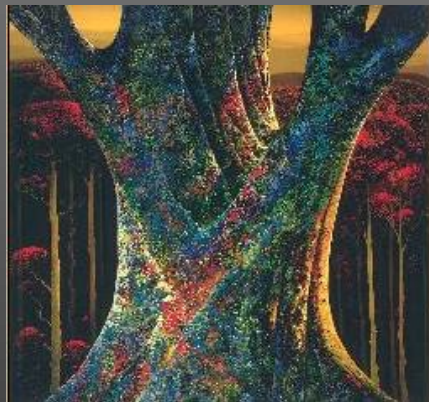
Visual Quality of Neural Style Transfer



Content



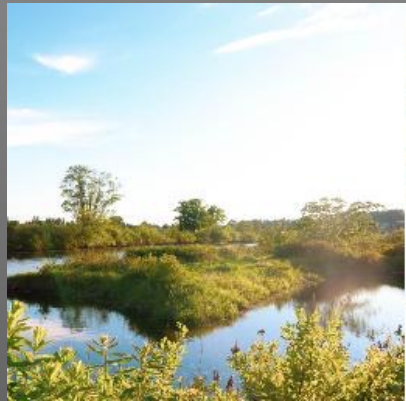
Style



Visual Quality



Visual Quality of State-of-the-Art NST



Content



Style



StyleSwap (2016)



AdaIN (2017)



WCT (2017)



LinearWCT (2019)



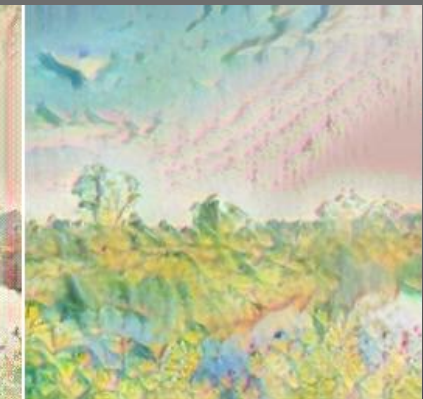
SANet (2019)



AdaAttn (2021)

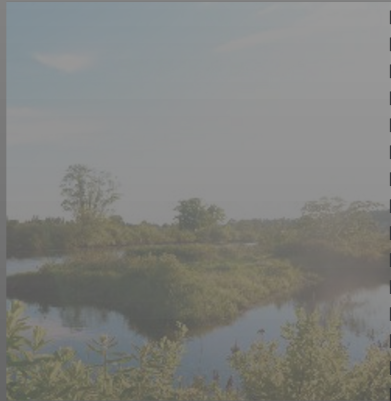


ArtFlow (2021)

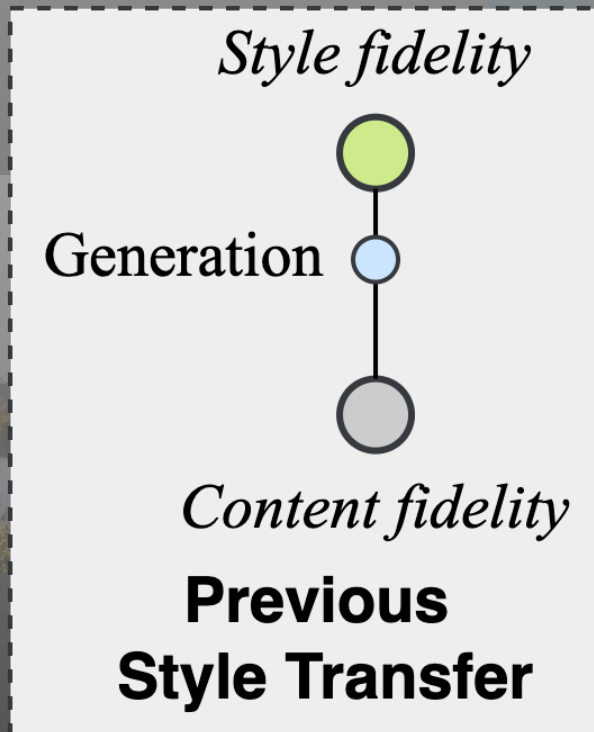


EFDM (2022)

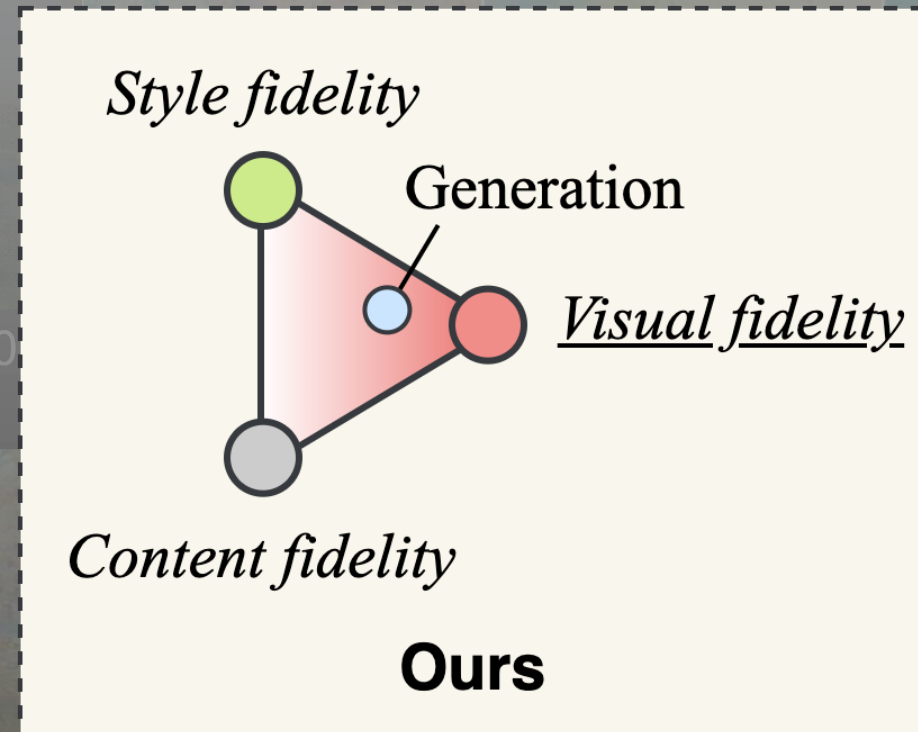
Visual Quality of State-of-the-Art NST



Content



Swap (2019)



nearWCT (2019)

SA Net (2019)

AdaAttn (2021)

ArtFlow (2021)

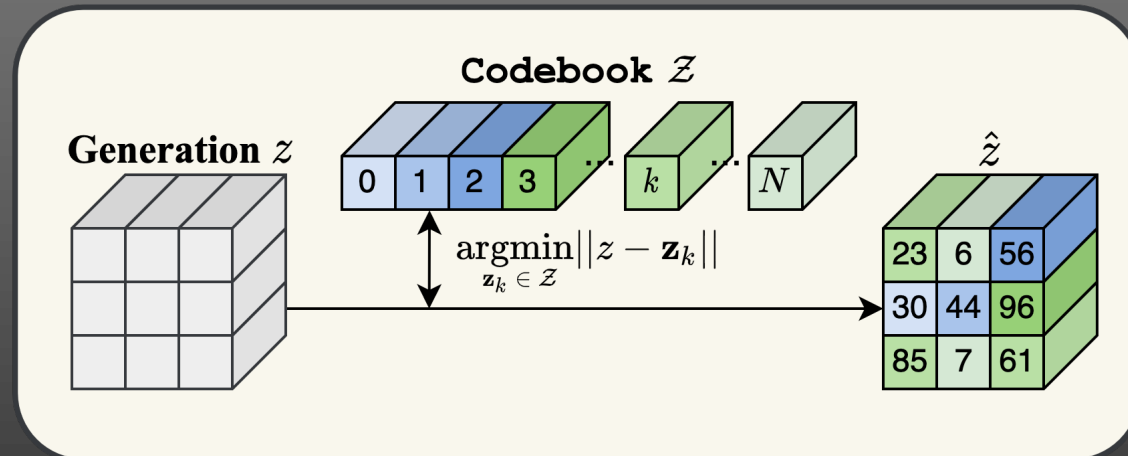
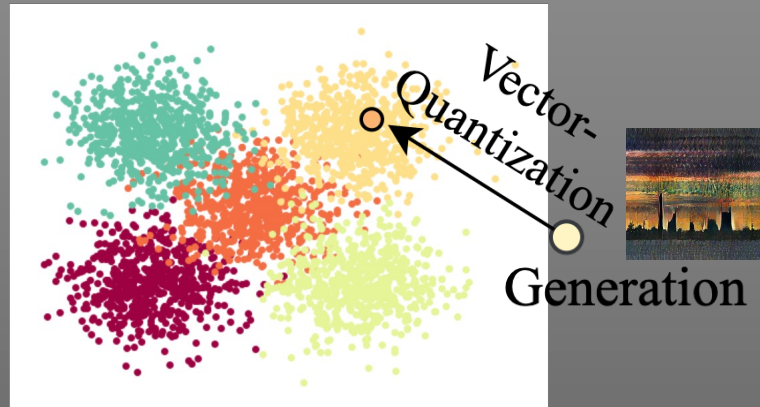
EFDM (2022)

Vector-Quantized Style Representations

Artworks



Style Space

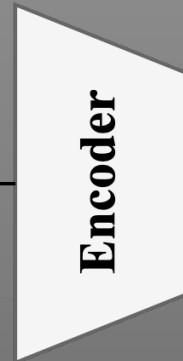
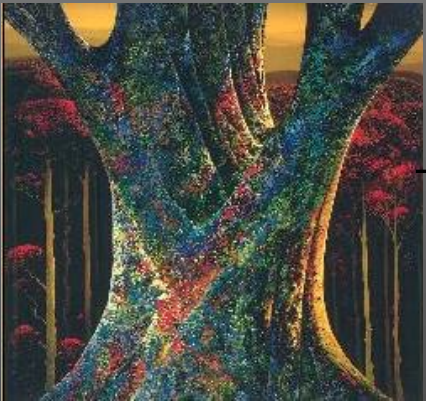


Quantizing Style Transfer Framework

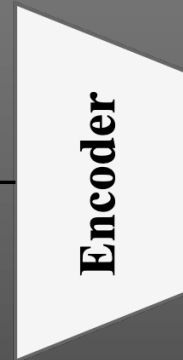
Content



Style

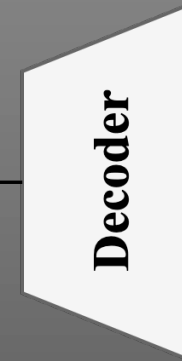


Vector-Quantization

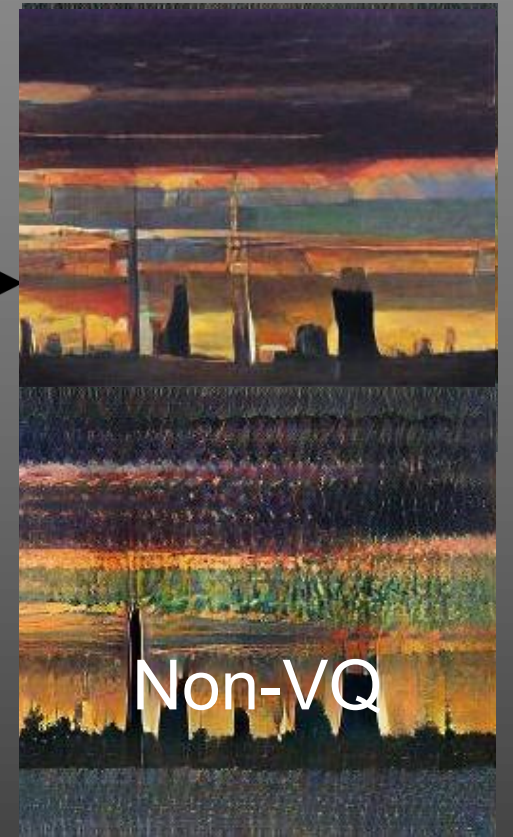


Vector-Quantization

ST Module

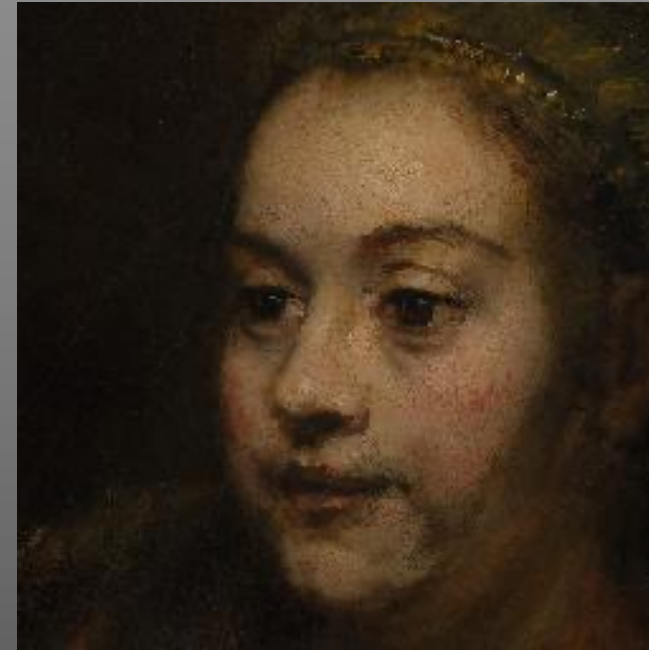


Generation



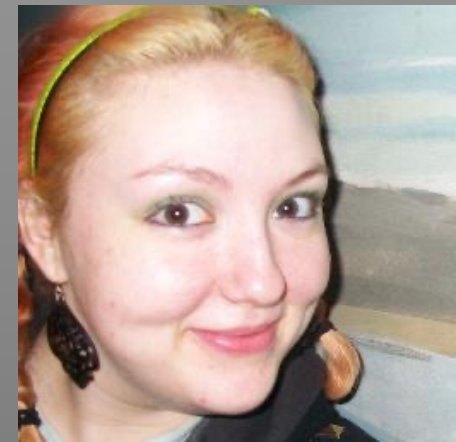
Non-VQ

Artistic Turing Test



Which one is a real artwork?

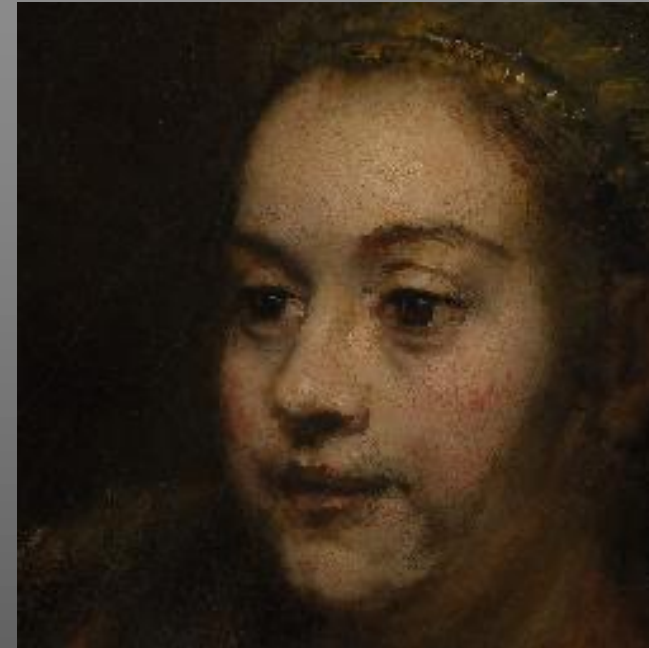
Artistic Turing Test



Photo



Our Generation



Real Artwork

Rembrandt, Hendrickje Stoffels', 1650

Artistic Turing Test



Which one is a real artwork?

Artistic Turing Test



Real Artwork

*Jacek Malczewski, 'Przekazanie palety',
1922*

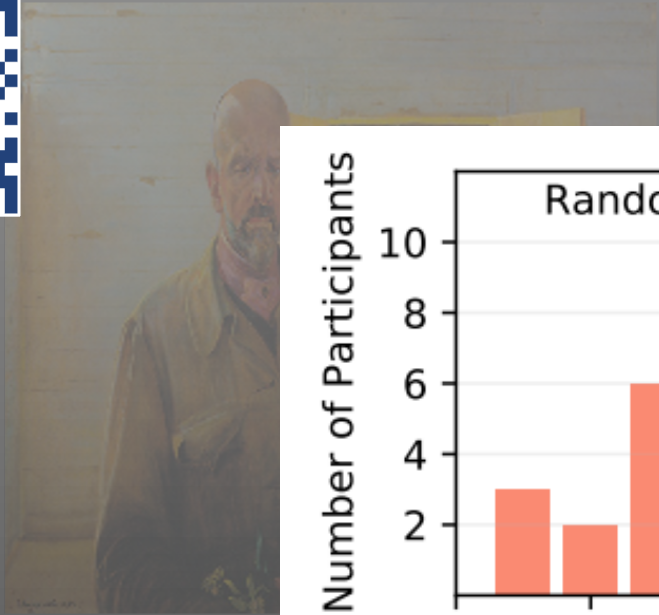


Our Generation

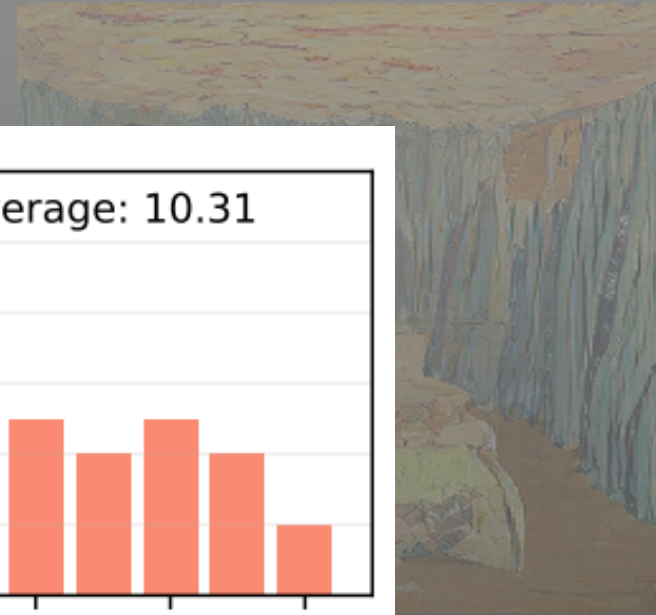


Photo

Artistic Turing Test



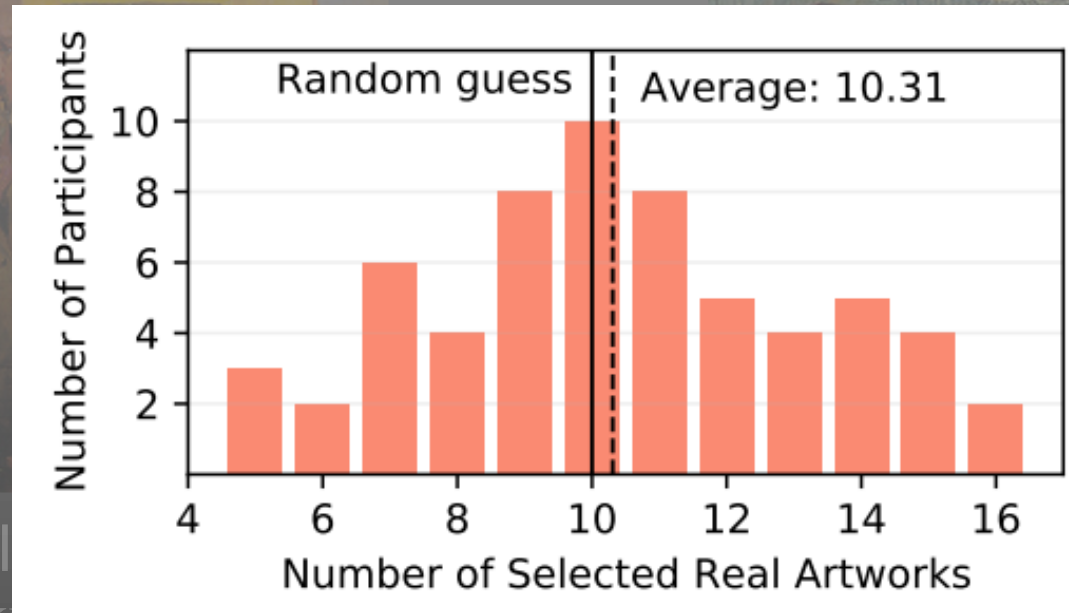
Real
Jacek Malczewski, 'Przekazanie pałery', 1922



AI-generated



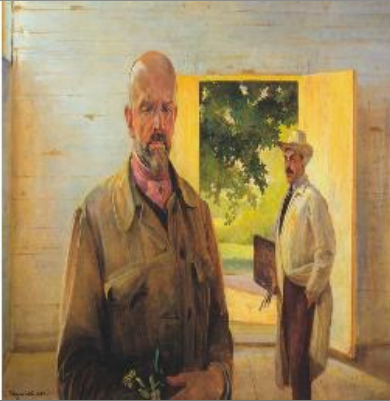
Photo



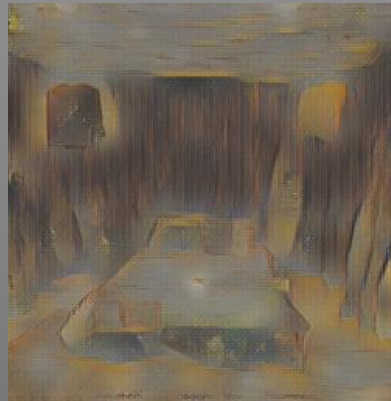
Comparison to State-of-the-Arts



Content



Style



StyleSwap (2016)



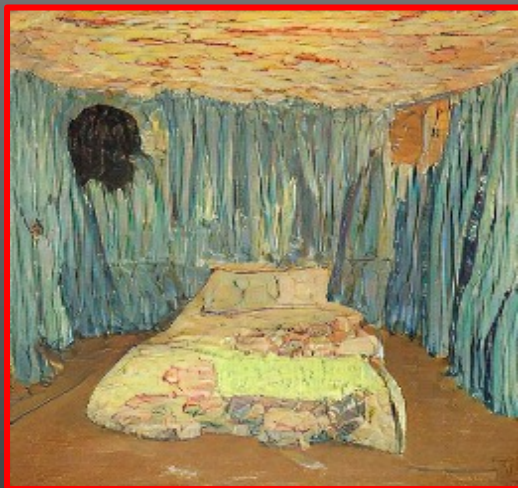
AdaIN (2017)



WCT (2017)



LinearWCT (2019)



Ours



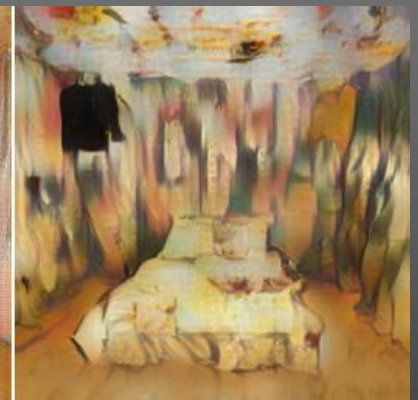
SANet (2019)



AdaAttn (2021)



ArtFlow (2021)



EFDM (2022)

Trade-Off Between Fidelity Terms

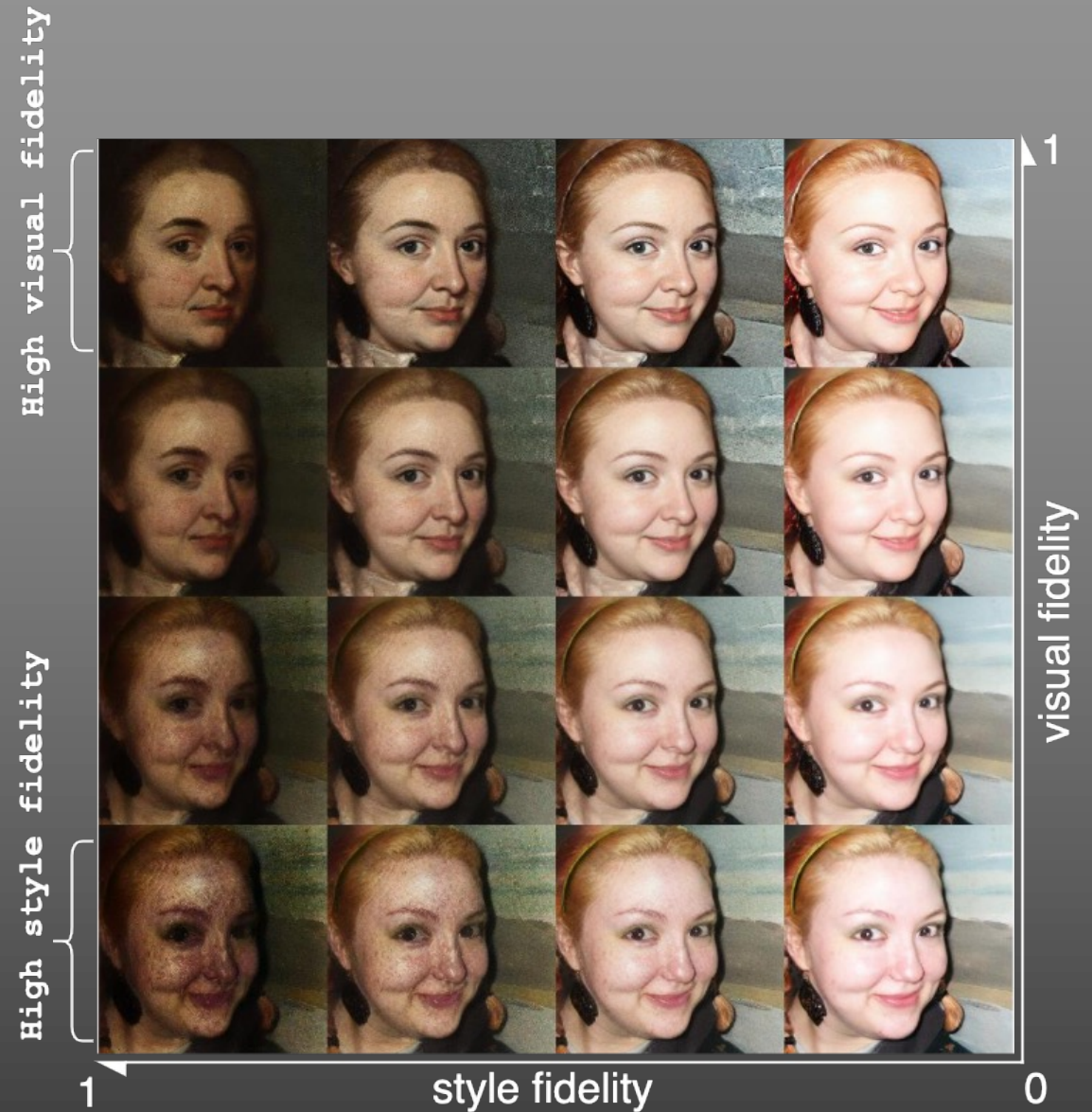
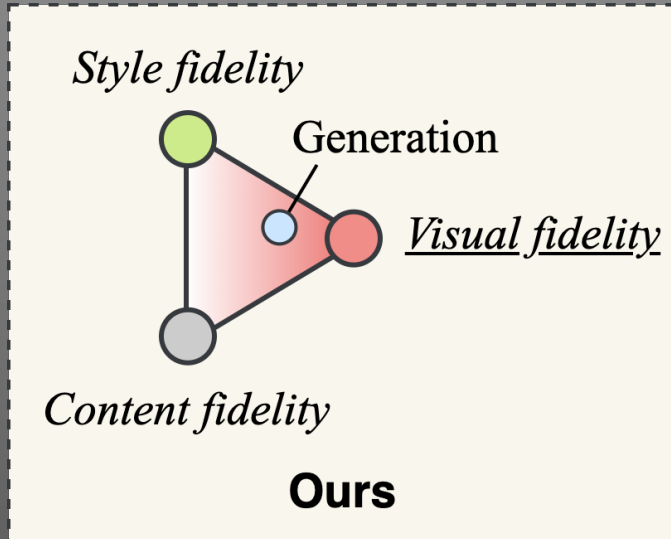
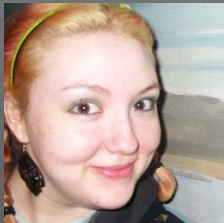


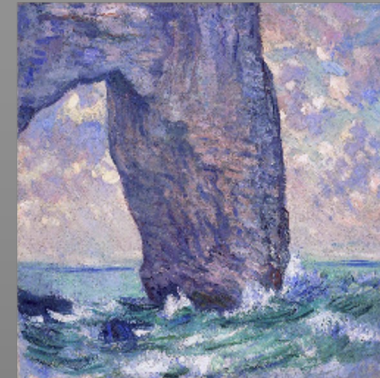
Photo → Art

Photo → Photo

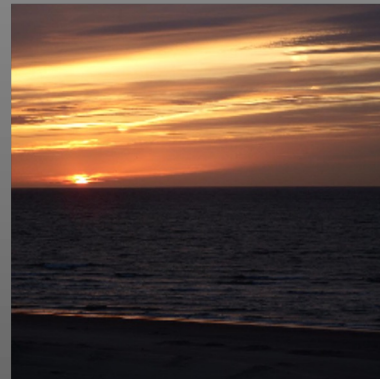
Art → Art

Art → Photo

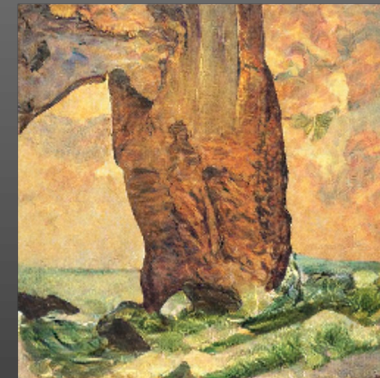
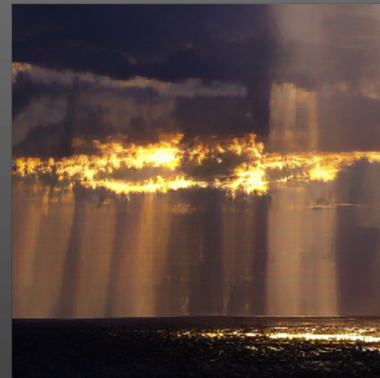
Input



Reference



Ours



Generalization to More Style Transfer Problems

text is not SVG - cannot display