

TexGaussian: Generating High-quality PBR Material via Octree-based 3D Gaussian Splatting

B. Xiong, J. Liu, J. Hu, C. Wu, J. Wu, X. Liu, C. Zhao, E. Ding, Z. Lian*
CVPR 2025

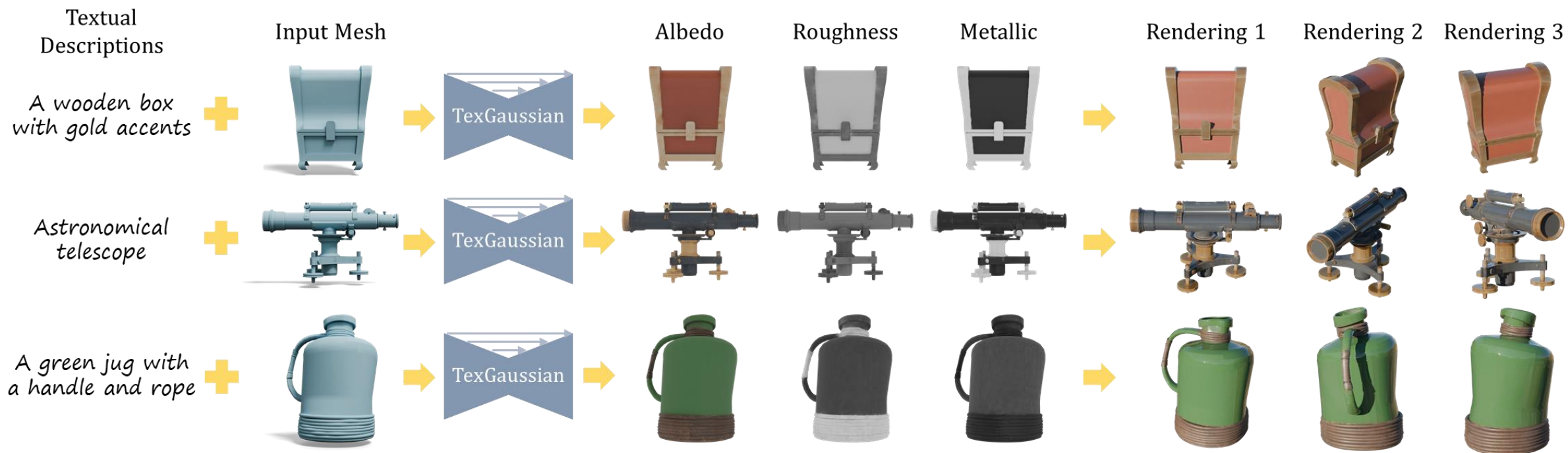


北京大学王选所智能图形计算实验室

Intelligent Graphics Computing Lab (IGCL), WICT, Peking University

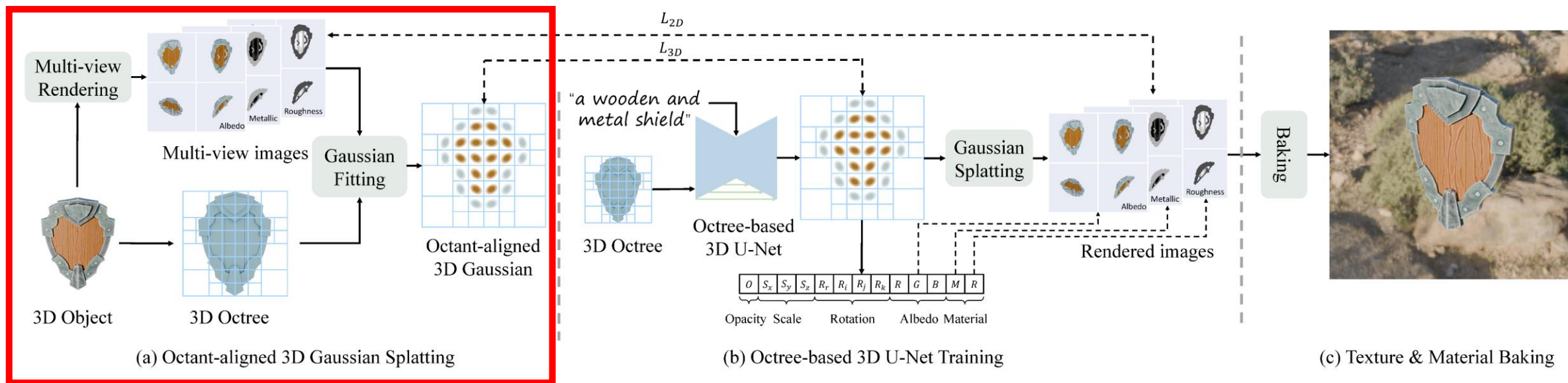


Introduction



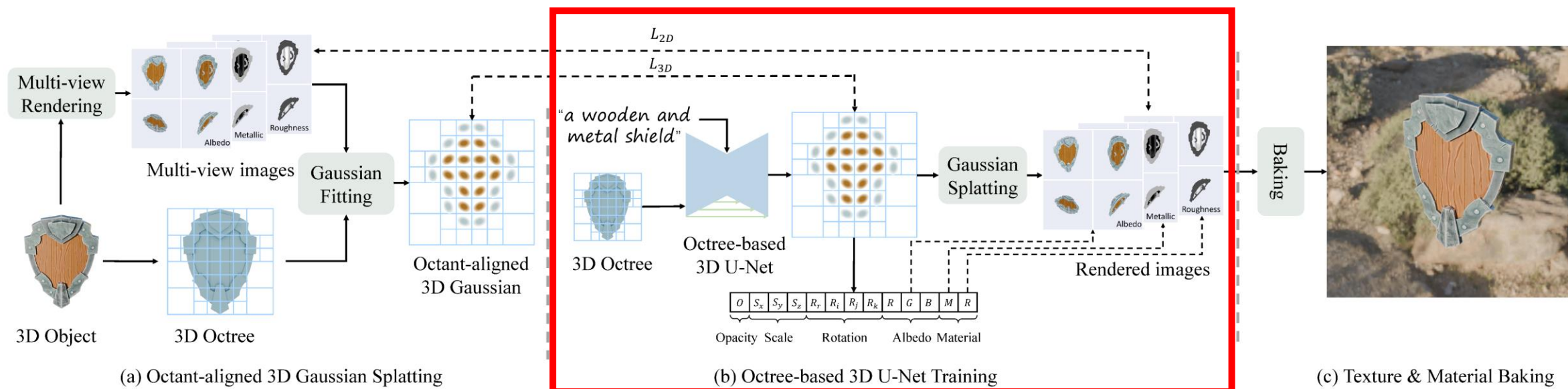
Method

- Octant-aligned 3DGS



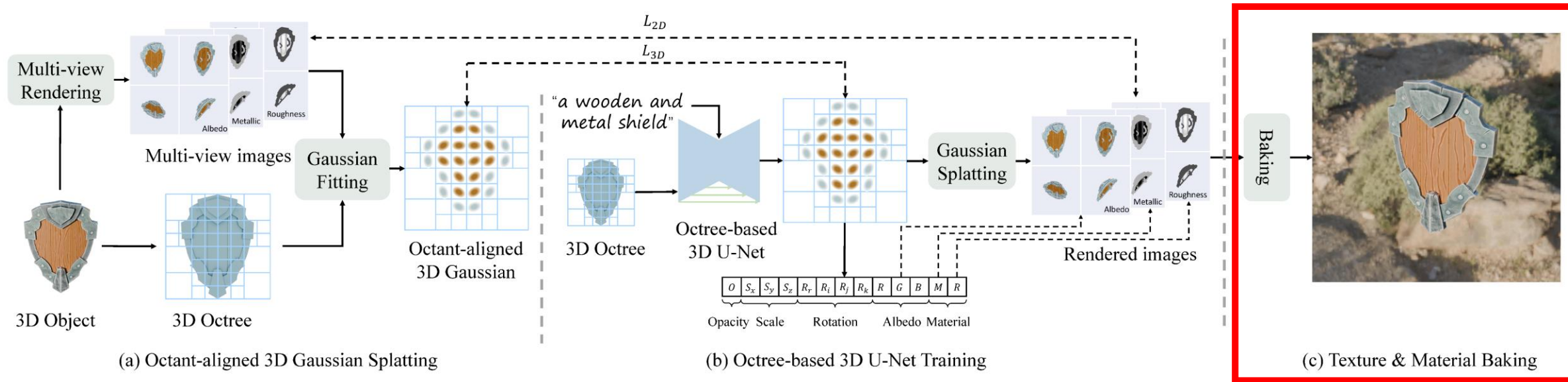
Method

- Octree-based 3D U-Net



Method

- An overview of our PBR material generation framework.



Experiments

- ShapeNet



Experiments

- ShapeNet

Methods	Average		Bench		Car		Chair		Table		Time
	FID↓	KID↓	FID↓	KID↓	FID↓	KID↓	FID↓	KID↓	FID↓	KID↓	
Point-UV (1-Stage) [53]	88.43	5.78	64.96	1.44	186.10	17.57	46.23	1.93	56.42	2.19	39.92s
Point-UV (2-Stage) [53]	61.49	2.67	67.48	1.61	89.38	5.82	41.33	1.53	47.75	1.72	49.75s
TexOct [25]	59.45	2.60	60.46	0.97	90.10	6.11	37.70	1.36	49.52	1.97	17.44s
Ours	49.76	2.07	46.37	0.44	80.20	5.22	29.96	1.09	42.52	1.54	11.02s
TEXTure [40]	169.82	7.94	152.53	5.28	236.58	18.52	119.71	2.86	170.46	5.11	132.21s
Text2Tex [7]	156.62	6.68	154.95	5.79	188.60	15.06	125.34	3.11	157.57	2.77	1005.58s
Paint3D [54]	135.25	4.67	104.16	1.68	204.22	13.06	104.64	2.24	127.98	1.71	231.56s
Ours	100.97	1.88	86.37	0.75	117.53	5.20	94.89	0.57	105.09	0.95	11.12s

Experiments

- ShapeNet

Point-UV



TexOct



Text2Tex



TEXTure



Paint3D



TexPainter

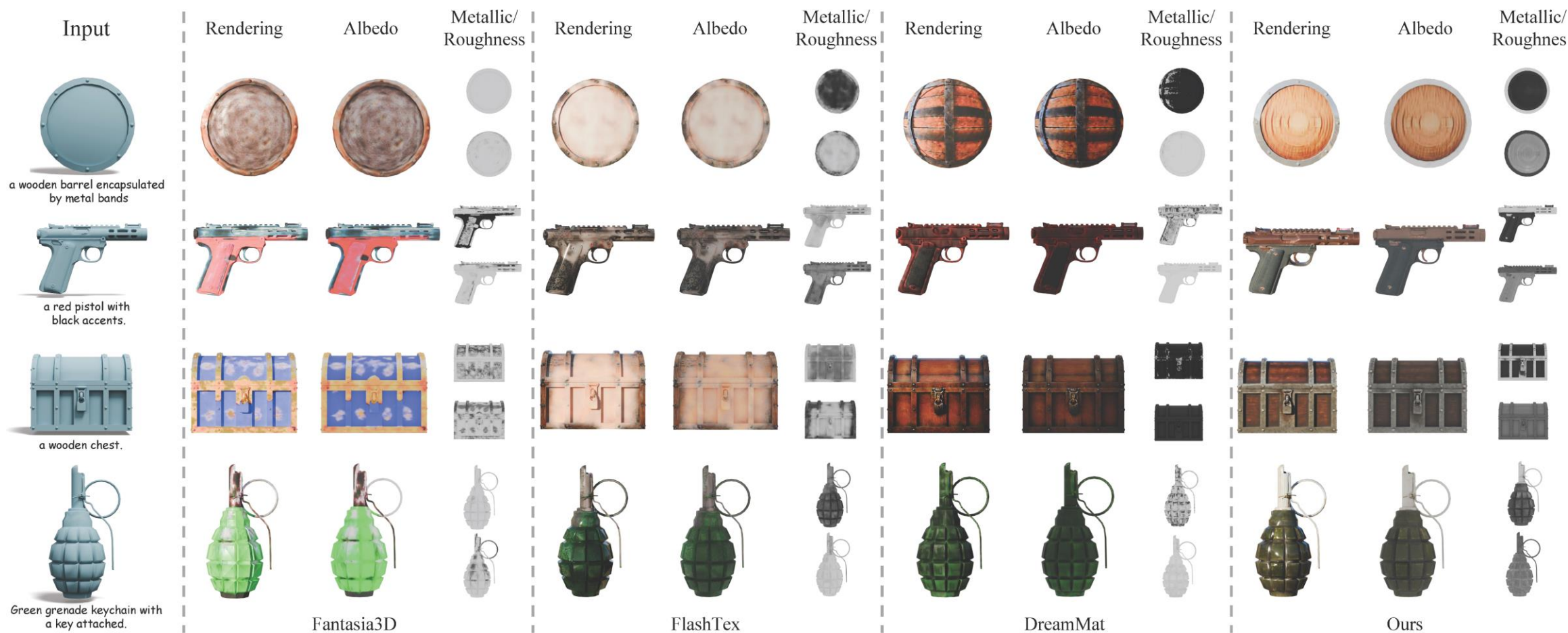


Ours



Experiments

- Text-conditioned PBR material generation



Experiments

- Text-conditioned PBR material generation

Methods	Albedo		PBR rendering		Time
	FID↓	KID↓	FID↓	KID↓	
Fantasia3D [8]	213.21	0.96	209.87	0.48	22.7mins
FlashTex [13]	185.24	1.13	186.82	0.42	20.3mins
DreamMat [58]	152.63	1.09	145.49	0.19	48.2mins
Ours	123.72	0.20	129.52	0.02	21.04s

Experiments

- Diversity

Albedo Roughness Metallic Rendering1 Rendering2



A blue denim barrel

Albedo Roughness Metallic Rendering1 Rendering2



A red barrel

Albedo Roughness Metallic Rendering1 Rendering2



A steel barrel

Albedo Roughness Metallic Rendering1 Rendering2



A wooden barrel

Albedo Roughness Metallic Rendering1 Rendering2



A blue and silver box with white accents

Albedo Roughness Metallic Rendering1 Rendering2



A green box with yellow accents

Albedo Roughness Metallic Rendering1 Rendering2



A red box with gold accents

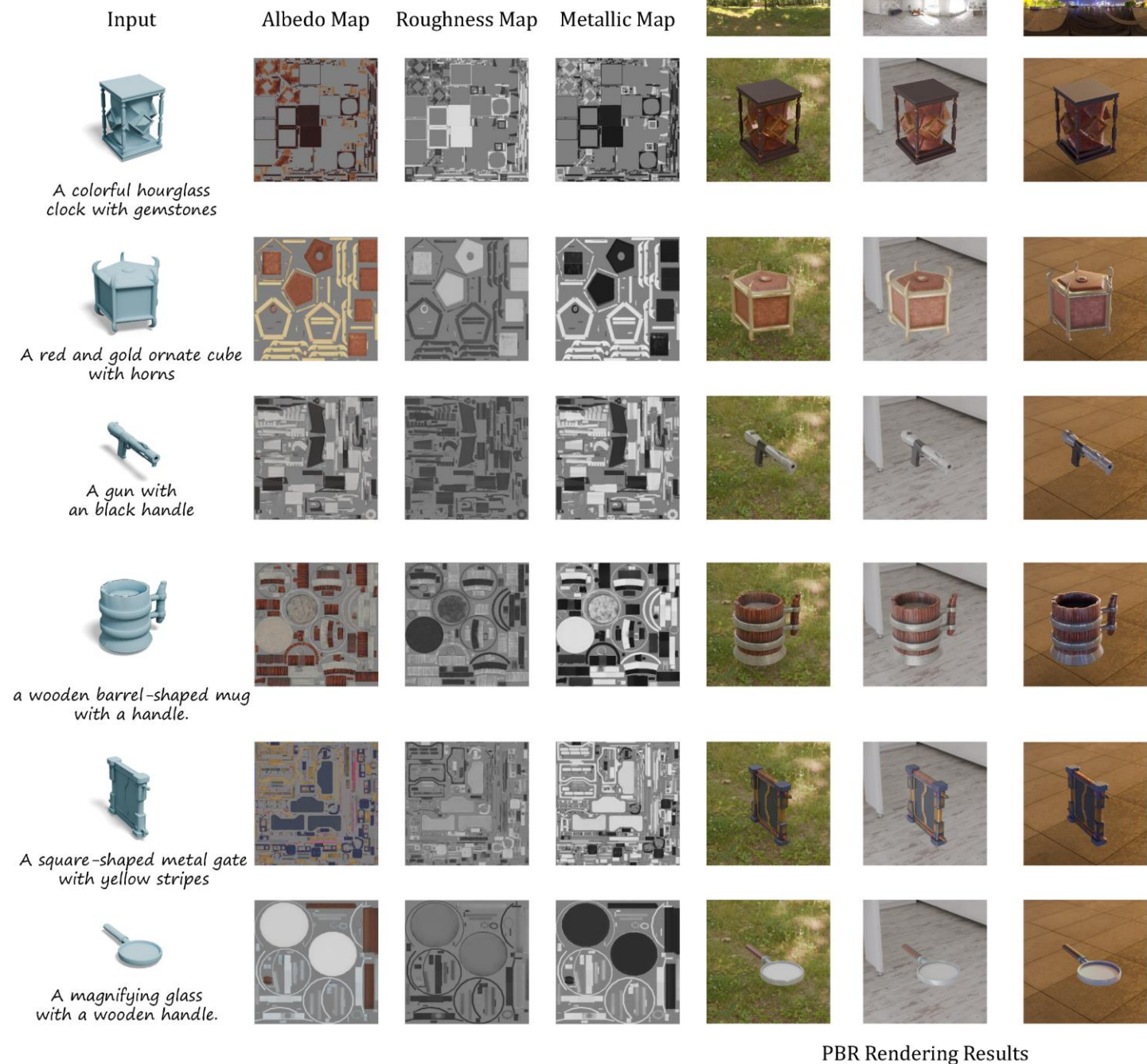
Albedo Roughness Metallic Rendering1 Rendering2



A wooden box with yellow accents

Experiments

- More Results



Ablation Study

- Essentials of Octree

Method	PSNR \uparrow	LPIPS \downarrow	SSIM \uparrow	3D Gaussian Number
Full voxel aligned	23.75	0.17	0.92	16,777,216 (256^3)
Octant-aligned	32.60	0.039	0.97	79,480

Ground truth



Octant-aligned

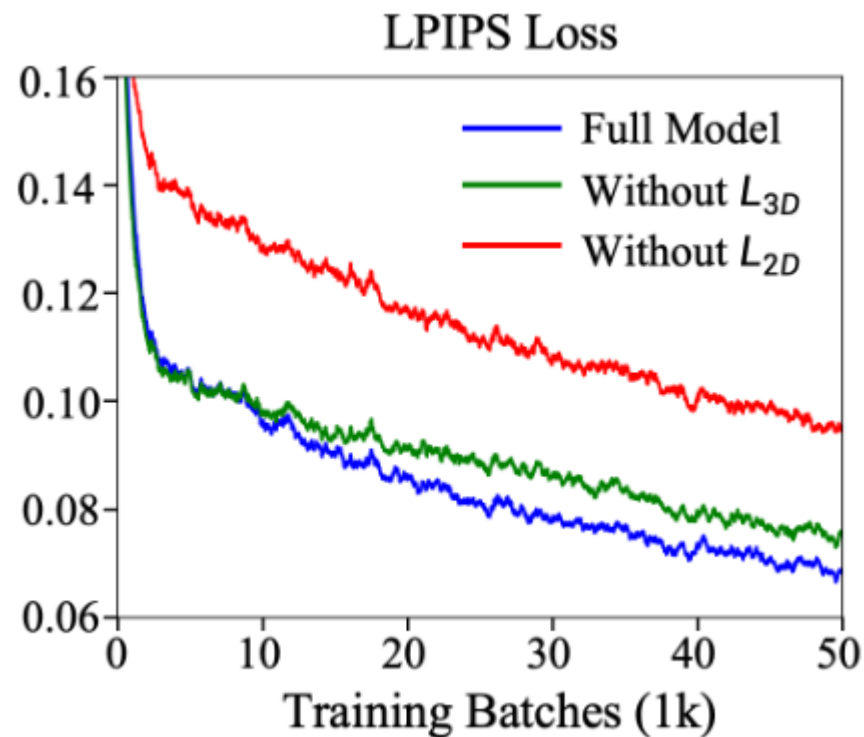
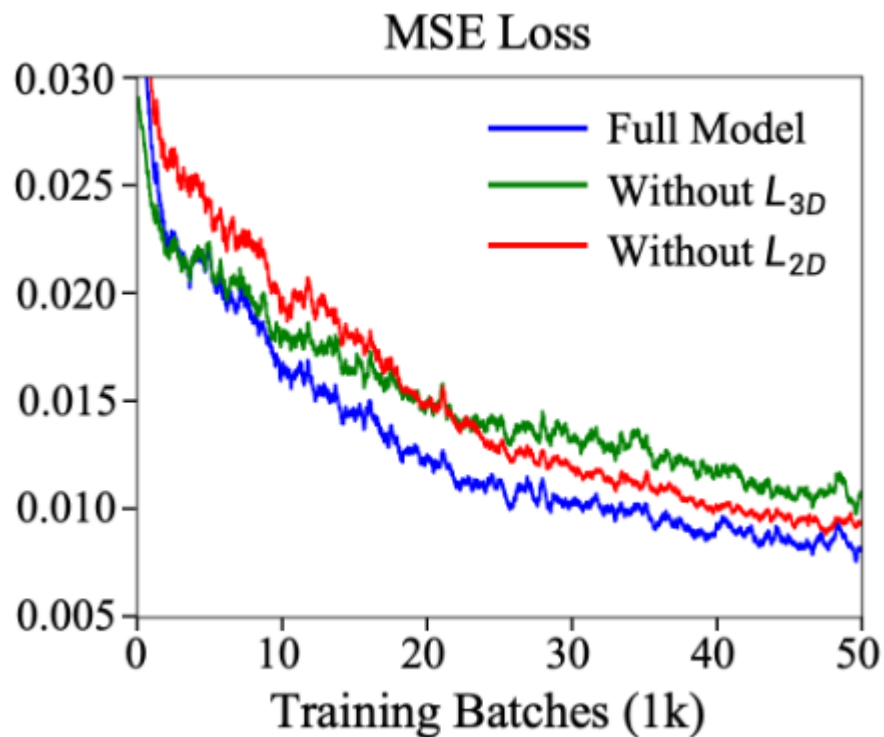


Voxel-aligned



Ablation Study

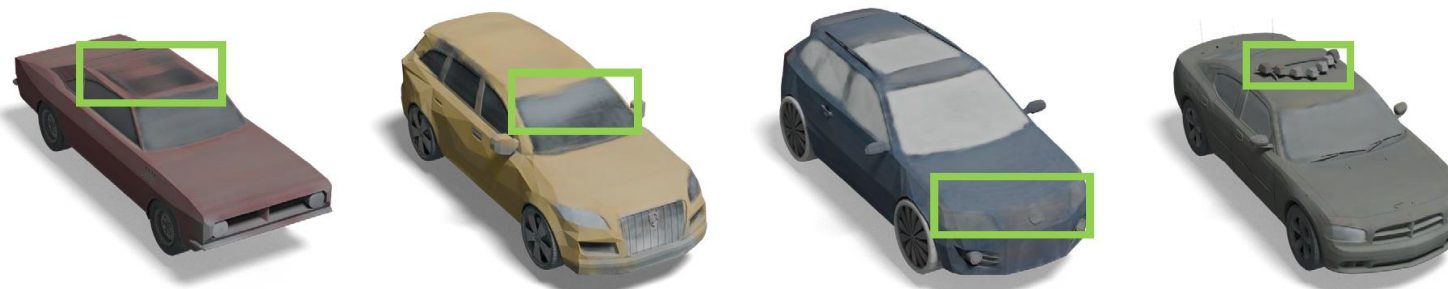
- Essentials of different losses



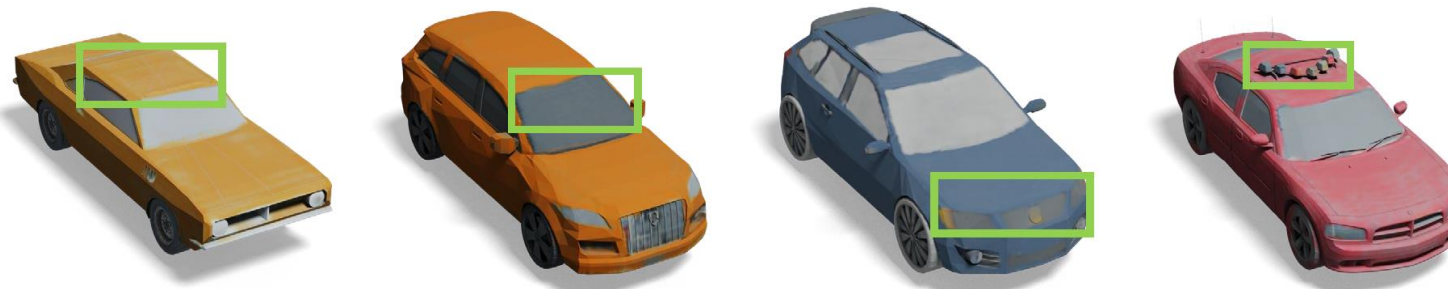
Ablation Study

- Essentials of different losses

w/o L_{2D}



Full Model



Thank You