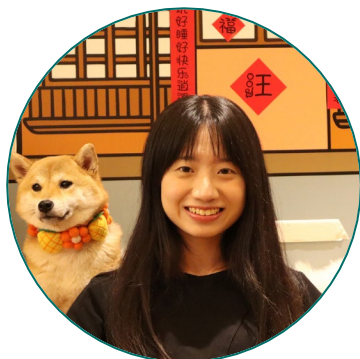


Feat2GS

Probing Visual Foundation Models with Gaussian Splatting



Yue Chen¹



Xingyu Chen¹



Anpei Chen^{1,3}



Gerard Pons-Moll^{3,4}



Yuliang Xiu^{1,2}

¹Westlake University

²Max Planck Institute for Intelligent Systems

³University of Tübingen, Tübingen AI Center

⁴Max Planck Institute for Informatics



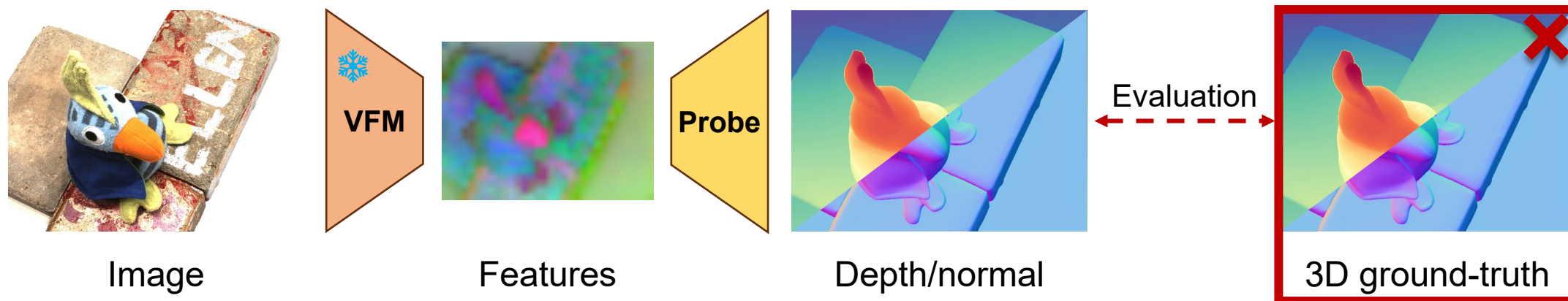
DINO
SD MAST3R
DUST3R
RADIO
MiDaS MAE
DINOv2 SAM
CLIP
...

How well do they understand the **3D world**?

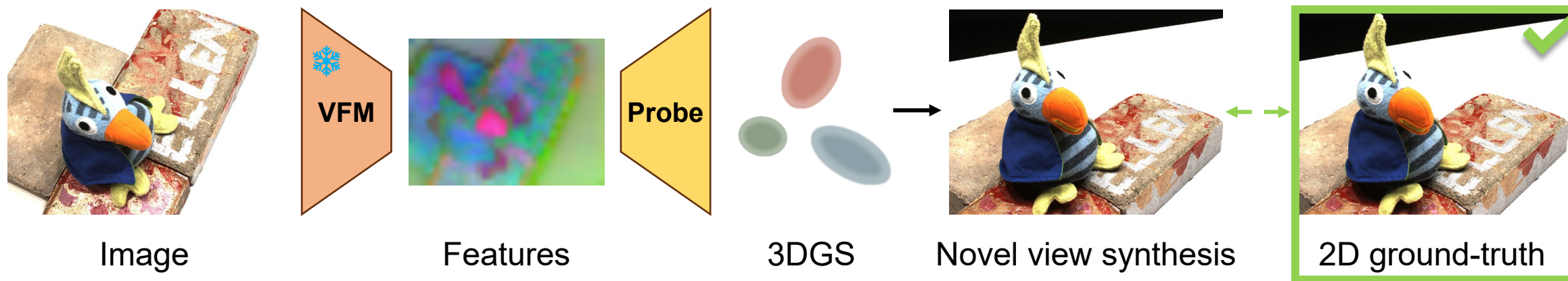
We need 3D probing.

Visual Foundation Models

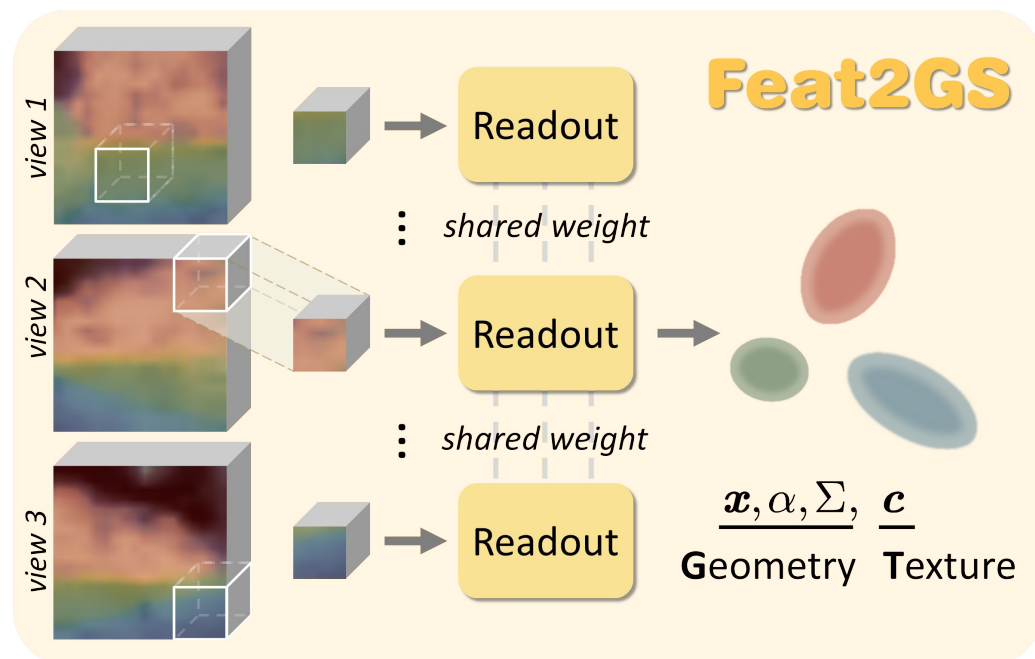
Previous 3D Probing




🔥 New Benchmark



Pipeline

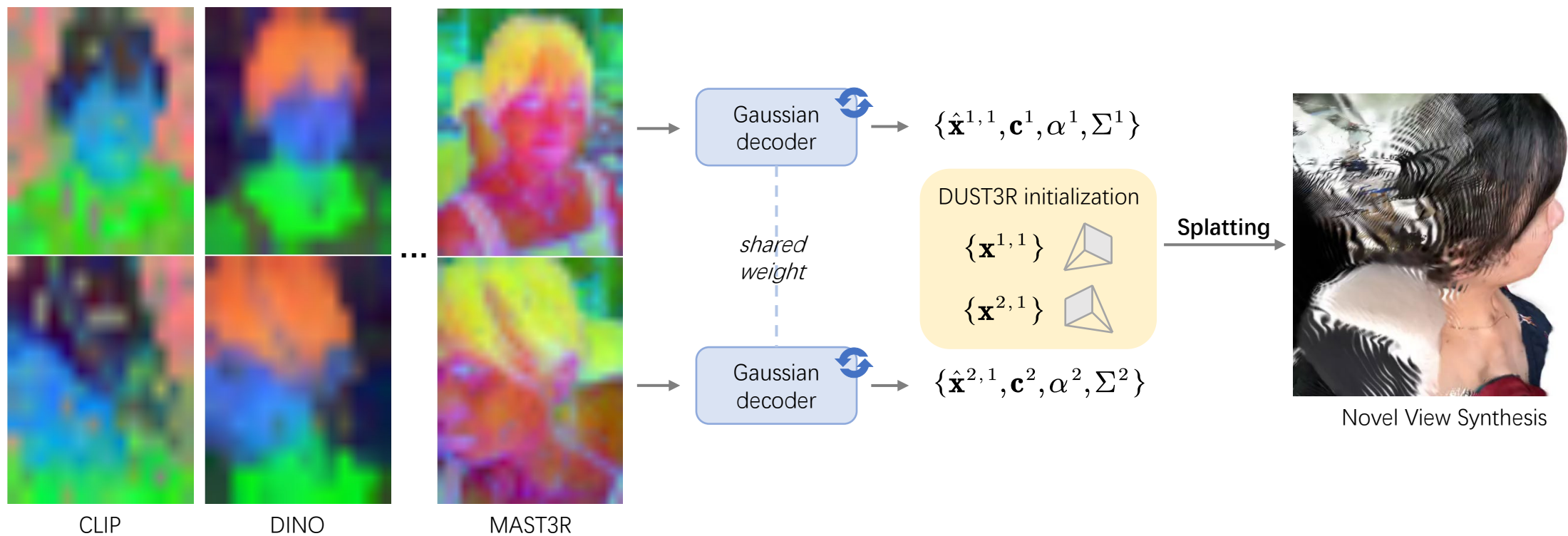


Probing Schemes

Probing	-Geometry	-Texture	-All
Feature- Readout	$\underline{x, \alpha, \Sigma}$	\underline{c}	$\underline{x, \alpha, \Sigma, c}$
Free-Optimize 	\underline{c}	$\underline{x, \alpha, \Sigma}$	/

Novel View Synthesis

Framework



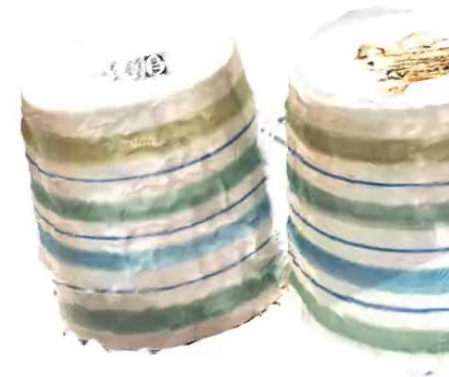
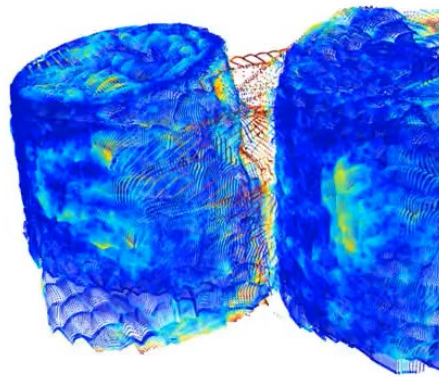
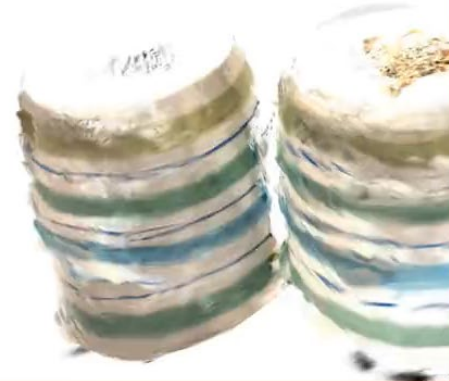
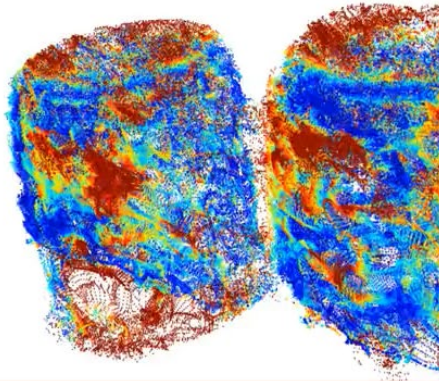
Our Findings: 3D Metrics and 2D Metrics are well-aligned.

DINOv2

VS.

DUS_t3R

Accuracy↓: -2.448
Completeness ↓: -.277
Distance↓: -6.163



PSNR↑: +1.02
SSIM↑: +.0233
LPIPS↓: -.0301

Pointcloud Error Map

Novel View Synthesis

Geometry Probing



RADIO



MASt3R

Texture Probing



RADIO



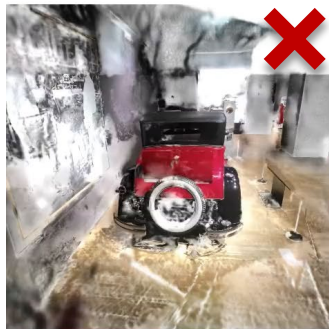
MAST3R



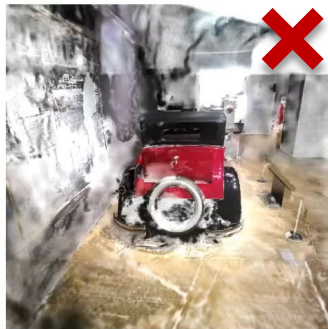
DUST3R



MiDaS



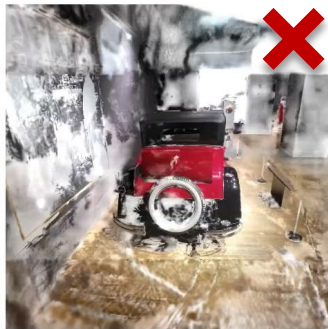
DINO



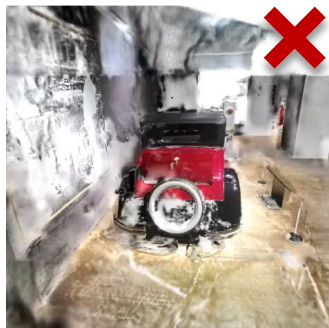
DINOv2



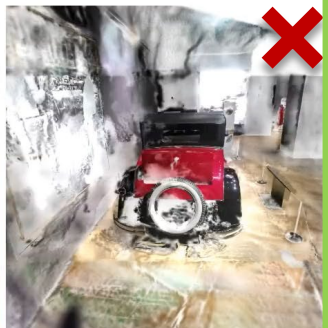
SAM



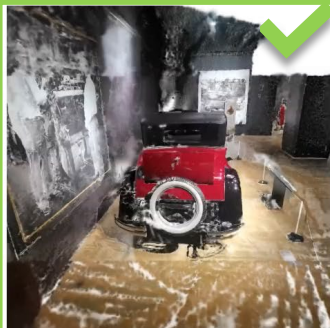
CLIP



MAE



SD



IUVRGB



Training views

Findings:

Foundation models
capture geometry well,
but struggle with texture.

Application

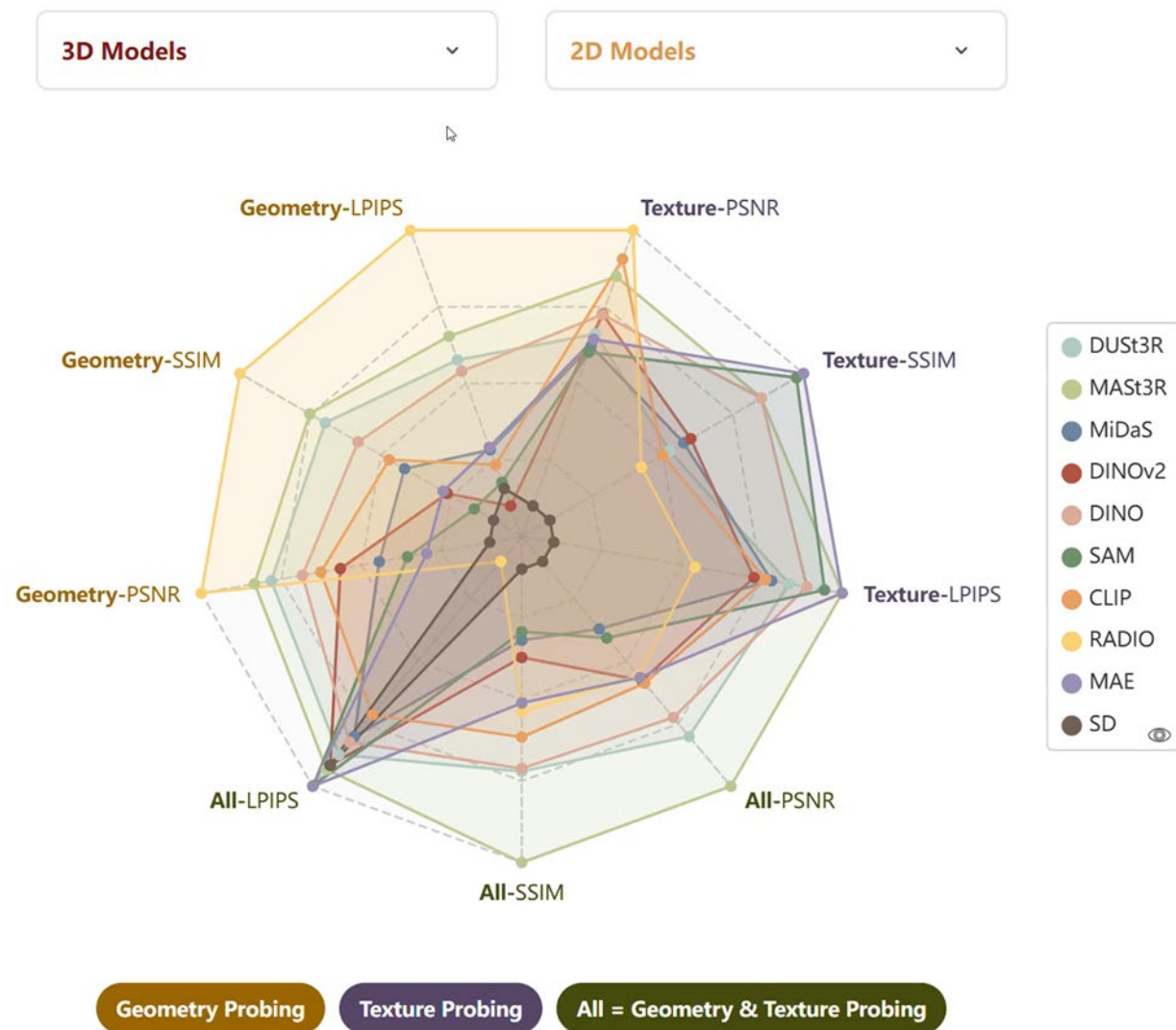


Input images



Novel View Synthesis / Normal Results

Interactive Probing Results

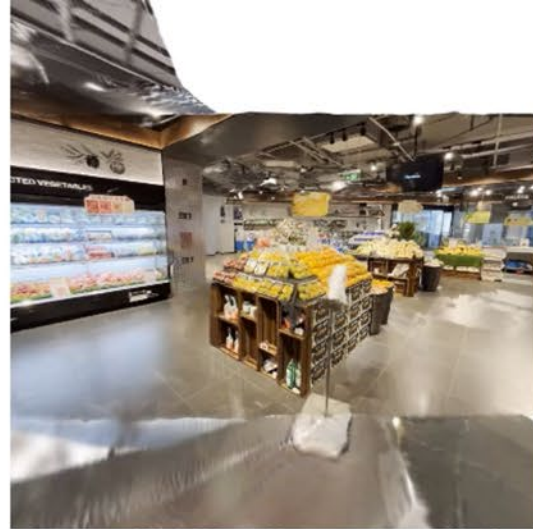


Welcome to our Website!

fanegg.github.io/Feat2GS

Play online and interact now!





Thanks!

